

Key Features

- IP68 rating
- Data over Power - 2 Core cable
- Compact design
- 48VAC



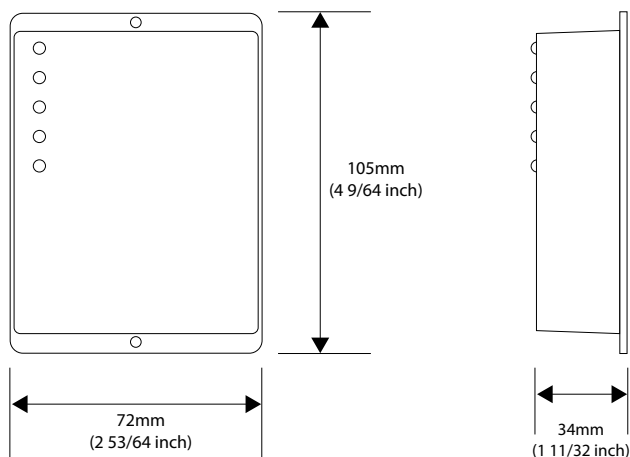
MaxiLINK® is used to control (via DMX-512) and power MaxiLED RGBW products such as the Focal Facade Series, Globe Series, Marker Effects Series, MaxiPUNCH Series and Spotlight Series.

On the input side, a DMX signal cable from any third party DMX controller or show design software is required, plus a 48VDC power supply is needed. Data and power (48VAC) are then output together to the MaxiLED RGBW products on one cable. A single MaxiLINK® controller is typically dedicated to an individual run (or strand).

Specifications

Power Input:	48VAC Data Over Power MaxiLINK® system
Power Output:	250 Watts Max. Per circuit
Data Input:	DMX-512
Length:	105mm (4 9/64 Inch)
Width:	72mm (2 53/64 Inch)
Depth:	34mm (1 11/32 Inch)
Fixing:	2 Pre-drilled holes for fixing
Protection:	Short circuit. Open circuit. Over temperature
Weight:	400g (14.1oz)
Connector:	IP68 and self-locking
Control:	DMX512
Operating Temperature:	-25°C to +50°C (-13°F to +122°F)
Listings:	CE
Capacity:	Each MaxiLINK® unit can control up to 100 RGBW control points (400 DMX channels) and power up to 305 ft (100m) of cable.

Dimensions



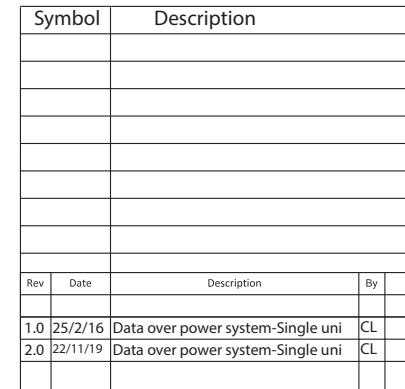
UK Designed and
Manufactured

MaxiLED Lighting

Unit 2, Farrington Place, Rossendale Road Ind. Est. Burnley, Lancashire. UK. BB11 5TY

T: +44 (0)845 8732 601 F: +44 (0)845 8732 602

E: sales@maxiledlighting.com Web: www.maxiledlighting.com



- MaxiLED
-
- Lighting

Drawing Title:

Drawn CL	Checked	Date 22 Nov 2019	Issue Date
Drawing Number: 1.0			Revision: 2.0



MaxiLED
Lighting

Drawing Title:

Drawn CL	Checked DH	Date 25 Feb 2020	Issue Date
Drawing Number: 3.0			Revision: 3.0