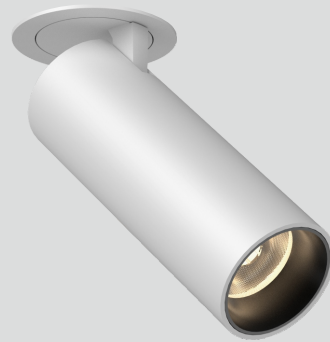
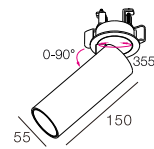


NEKO / PURE Art-R
Ceiling Mounted PURE Art



15W CRI90 2700K 3000K 4000K 18° 24° 36° CITIZEN Micro-LED technology 50,000h@L80B10 UGR < 10 IP20 5 YEAR GUARANTEE CB CE



LED Power	System Power	LED Voltage	LED Current	CRI	CCT	Beam	LED Output	System Output	Code
13 W	15 W	36 V	350 mA	90	2700K	18°	1100lm	900lm	PAR2-9271815N-WB
						24°	1100lm	900lm	PAR2-9272415N-WB
						36°	1100lm	900lm	PAR2-9273615N-WB
						18°	1200lm	950lm	PAR2-9301815N-WB
						24°	1200lm	950lm	PAR2-9302415N-WB
						36°	1200lm	950lm	PAR2-9303615N-WB
					4000K	18°	1300lm	1000lm	PAR2-9401815N-WB
						24°	1300lm	1000lm	PAR2-9402415N-WB
						36°	1300lm	1000lm	PAR2-9403615N-WB
						18°	1100lm	900lm	PAR2-9271815N-BB
						24°	1100lm	900lm	PAR2-9272415N-BB
						36°	1100lm	900lm	PAR2-9273615N-BB
13 W	15 W	36 V	350 mA	90	2700K	18°	1100lm	900lm	PAR2-9271815N-BB
						24°	1100lm	900lm	PAR2-9272415N-BB
						36°	1100lm	900lm	PAR2-9273615N-BB
						18°	1200lm	950lm	PAR2-9301815N-BB
						24°	1200lm	950lm	PAR2-9302415N-BB
						36°	1200lm	950lm	PAR2-9303615N-BB
4000K	18°	1300lm	1000lm	PAR2-9401815N-BB					
	24°	1300lm	1000lm	PAR2-9402415N-BB					
	36°	1300lm	1000lm	PAR2-9403615N-BB					

Code Remark: F=(ON-OFF) P=(Phase Dim) D=(DALI Dim)

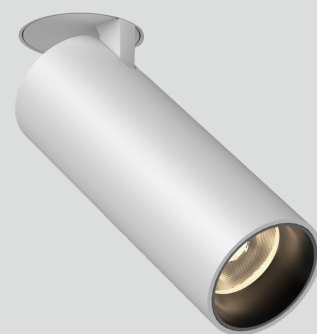
Optional accessory



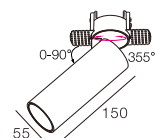
Code for PUAR-9302511F-WB with Honeycomb
PUAR-9302511F-WB-H

Honeycomb

NEKO / PURE Art-TR
Ceiling Mounted PURE S



15W CRI90 2700K 18° 3000K 24° 4000K 36° CITIZEN Micro-Streamlight 50,000h@L80B10 UGR < 10 IP20 5 YEARS GUARANTEE CB CE



LED Power	System Power	LED Voltage	LED Current	CRI	OCT	Beam	LED Output	System Output	Code						
13 W	15 W	36 V	350 mA	90	2700K	18°	1100lm	900lm	PAT2-9271815N-WB						
						24°	1100lm	900lm	PAT2-9272415N-WB						
						36°	1100lm	900lm	PAT2-9273615N-WB						
						3000K	18°	1200lm	950lm	PAT2-9301815N-WB					
							24°	1200lm	950lm	PAT2-9302415N-WB					
							36°	1200lm	950lm	PAT2-9303615N-WB					
						4000K	18°	1300lm	1000lm	PAT2-9401815N-WB					
							24°	1300lm	1000lm	PAT2-9402415N-WB					
							36°	1300lm	1000lm	PAT2-9403615N-WB					
						13 W	15 W	36 V	350 mA	90	2700K	18°	1100lm	900lm	PAT2-9271815N-BB
												24°	1100lm	900lm	PAT2-9272415N-BB
												36°	1100lm	900lm	PAT2-9273615N-BB
3000K	18°	1200lm	950lm	PAT2-9301815N-BB											
	24°	1200lm	950lm	PAT2-9302415N-BB											
	36°	1200lm	950lm	PAT2-9303615N-BB											
4000K	18°	1300lm	1000lm	PAT2-9401815N-BB											
	24°	1300lm	1000lm	PAT2-9402415N-BB											
	36°	1300lm	1000lm	PAT2-9403615N-BB											

Code Remark: F=(ON-OFF) P=(Phase Dim) D=(DALI Dim)

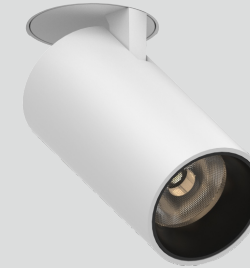
Optional accessory



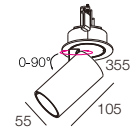
Honeycomb

Code for PATC-9302511F-WB with Honeycomb
PATC-9302511F-WB-H

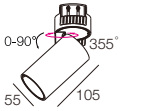




11W CRI90 2700K 3000K 4000K 18° 24° 36° CITIZEN Micro-Summadisch 50,000h@L80B10 UGR < 10 IP20 5 YEAR GUARANTEE CB CE



11W CRI90 2700K 3000K 4000K 18° 24° 36° CITIZEN Micro-Summadisch 50,000h@L80B10 UGR < 10 IP20 5 YEAR GUARANTEE CB CE




LED Power	System Power	LED Voltage	LED Current	CRI	CCT	Beam	LED Output	System Output	Code	
9 W	11 W	36 V	250 mA	90	2700K	18°	850lm	640lm	PAR1-9271811N-WB	
						24°	850lm	640lm	PAR1-9272411N-WB	
						36°	850lm	640lm	PAR1-9273611N-WB	
						3000K	18°	950lm	720lm	PAR1-9301811N-WB
							24°	950lm	720lm	PAR1-9302411N-WB
							36°	950lm	720lm	PAR1-9303611N-WB
						4000K	18°	1050lm	800lm	PAR1-9401811N-WB
							24°	1050lm	800lm	PAR1-9402411N-WB
							36°	1050lm	800lm	PAR1-9403611N-WB



9 W	11 W	36 V	250 mA	90	2700K	18°	850lm	640lm	PAR1-9271811N-BB	
						24°	850lm	640lm	PAR1-9272411N-BB	
						36°	850lm	640lm	PAR1-9273611N-BB	
						3000K	18°	950lm	720lm	PAR1-9301811N-BB
							24°	950lm	720lm	PAR1-9302411N-BB
							36°	950lm	720lm	PAR1-9303611N-BB
						4000K	18°	1050lm	800lm	PAR1-9401811N-BB
							24°	1050lm	800lm	PAR1-9402411N-BB
							36°	1050lm	800lm	PAR1-9403611N-BB

Code Remark: F=(ON-OFF) P=(Phase Dim) D=(DALI Dim)

Optional accessory

 Code for PUAR-9302511F-WB with Honeycomb
PUAR-9302511F-WB-H
Honeycomb




LED Power	System Power	LED Voltage	LED Current	CRI	CCT	Beam	LED Output	System Output	Code	
9 W	11 W	36 V	250 mA	90	2700K	18°	850lm	640lm	PAT1-9271811N-WB	
						24°	850lm	640lm	PAT1-9272411N-WB	
						36°	850lm	640lm	PAT1-9273611N-WB	
						3000K	18°	950lm	720lm	PAT1-9301811N-WB
							24°	950lm	720lm	PAT1-9302411N-WB
							36°	950lm	720lm	PAT1-9303611N-WB
						4000K	18°	1050lm	800lm	PAT1-9401811N-WB
							24°	1050lm	800lm	PAT1-9402411N-WB
							36°	1050lm	800lm	PAT1-9403611N-WB



9 W	11 W	36 V	250 mA	90	2700K	18°	850lm	640lm	PAT1-9271811N-BB	
						24°	850lm	640lm	PAT1-9272411N-BB	
						36°	850lm	640lm	PAT1-9273611N-BB	
						3000K	18°	950lm	720lm	PAT1-9301811N-BB
							24°	950lm	720lm	PAT1-9302411N-BB
							36°	950lm	720lm	PAT1-9303611N-BB
						4000K	18°	1050lm	800lm	PAT1-9401811N-BB
							24°	1050lm	800lm	PAT1-9402411N-BB
							36°	1050lm	800lm	PAT1-9403611N-BB

Code Remark: F=(ON-OFF) P=(Phase Dim) D=(DALI Dim)

Optional accessory

 Code for PUAR-9302511F-WB with Honeycomb
PUAR-9302511F-WB-H
Honeycomb