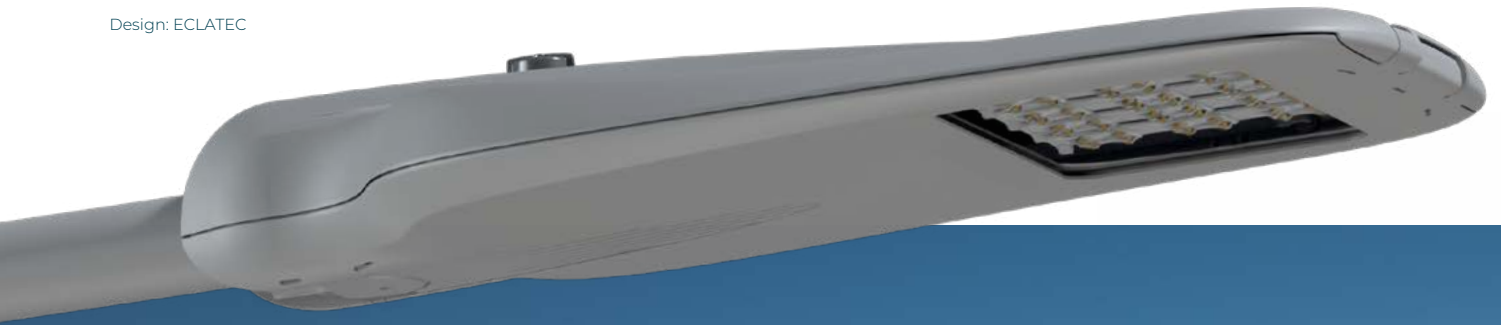


LUMINAIRES

NOA

Design: ECLATEC



**Configuration**

NOA 1
Column height: 4 m

Configuration

NOA 1
PICO bracket
Outreach 150 mm
NOA X1 backlight
Column height: 5 m

Configuration

NOA 2
AVEO bracket
Outreach 1000 mm
Column height: 7 m

Configuration

NOA 2
PICO bracket
Outreach 1000 mm
Column height: 6 m

NOA

Design: ECLATEC



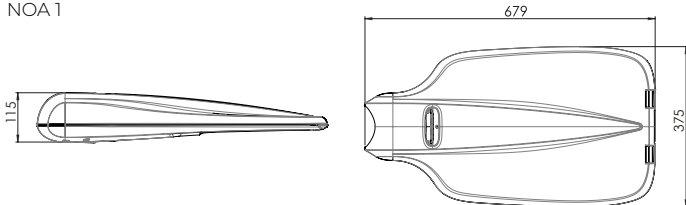
NOA S1
With Zhaga Book 18 connector

DESCRIPTION

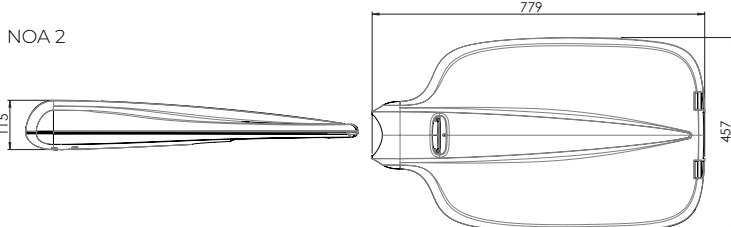
Product name	NOA 1	NOA 2
Segmentation	Models available in 3 levels: - 1E: Unique version for standard use - 2E A: Fixed settings for night dimming - 2E B: Fixed current setting at 700 mA, without options - 3E: Most efficient and customizable version	
Smart-ready®	Luminaire fitted with Zhaga book 18 connector (3E version), allowing the direct connection of "smart" modules. Luminaire without connector available upon request.	
Housing	Injection die-cast aluminium body	
Bowl	Thermally toughened glass	
Finish	1E: 7035 RAL 2E, 3E: Polyester powder coating, any colour available	
Impact protection	IK 10	
Ingress Protection	IP66 Extruded silicone gasket Cable gland with anchoring device Breathing system with activated carbon filter	
Dimensions (L x l x h)	679 x 375 x 115 mm	779 x 457 x 115 mm
Weight	8.1kg	10.2kg
Windage area	0.07m ²	0.08m ²
Materials used	Aluminium 72% Glass 8% Steel 6% Plastic 1% Other 13%	
Electrical class	Class I or II	
Wiring	Optional for 2E and 3E versions	

DIMENSIONS

NOA 1



NOA 2





NOA X2
With Zhaga Book 18 connector

SOURCES & PHOTOMETRIC DISTRIBUTIONS

	NOA 1	NOA 2
Sources	BLS strips 1E: 2 BLS12, 3 BLS12 2E: 2 BLS8, 2 BLS12, 3 BLS12 3E: 1 BLS8, 2 BLS8, 2 BLS12, 3 BLS12	3 BLS12, 4 BLS12, 5 BLS12, 6 BLS12
Colour temperature	Amber*, 2200 K, 2400 K, 2700 K, 3000K, 4000 K	
Optical Distribution	QUADRALENS 1E: ERS, ERL 2E/ 3E: ERS, ERE, ERL, ECa, LRL, LRS, ETS, PFA, EPD, EPG	1E: ERS, ERL 2E/ 3E: ERS, ERE, ERL, ECa, LRL, LRS, PFA
Backlight shield option	Medium or strong cut-off	
Power supply current	1E/2EB: 700mA, 2EA: ANF ⁽¹⁾ , 3E: up to 700 mA ⁽²⁾	
Driver protection	10 kV: 3E version 8 kV: version 2E ^{A/B} 4 kV: 1E version only NOA 1	

*Approx. 1800K, only on BLS12 as standard. (1) ANF: Unique program for driver, Fixed Night Dimming: 23 h – 5 h at 350 mA and 700 mA for the remaining time, (2) I>700mA possible on request. **E/L/P:** Lighting/Luminance/Projection, **R/C/T/F/P:** Road/Circular/Pavement/Beam/Zebra crossing, **E/S/L/A/D/G:** Narrow/Standard/Wide/Asymmetrical/Right/Left




BLS strips

OPTIONS


	3E version:	NOA 1	NOA 2
At the lighting point			
Adjustable current (driver or bottom of the pole)		✓	✓
Dimming (driver, bottom of the pole or Bluetooth)		✓	✓
Built-in detection		✓	-
Remote detection		✓	✓
DALI protocol		✓	✓
Smart-Ready® configuration (ZD4i)		✓*	✓*
In a local network			
Communicating detection with pilot wire		✓	✓
Wireless communication sensing		✓	✓
Remote management			
WIZARD CMS system		✓	✓

* Double Smart-ready only available for X versions
Details of the functions available on pages 272 to 279 and in the LED synopsis located on under the flap on the front cover


MECHANICAL INTERFACES



Top rotating arm built into the luminaire
- Top or Side Ø 60 mm
- Top Ø 76 mm in option for 2E and 3E versions



Tilts:
- TOP: 0° ; +5° ; +10° ; +15° ; +20°
- LAT: 0° ; -5° ; -10° ; -15° ; -20°



Locking by 2 pressure screws

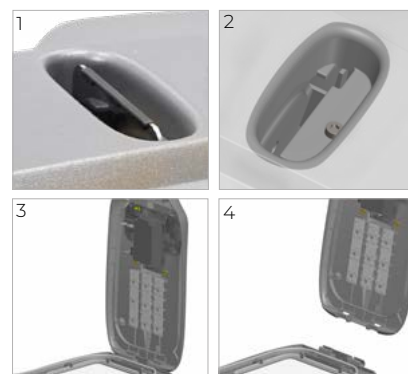
MAINTENANCE

Opening and closing (X version)

The upper part of the luminaire cover can be opened without tools using the latch {1}
Cutting of the power supply when the luminaire is opened by a dedicated ECLATEC connector {3}

Sources maintenance

Replacement without tools onsite of the luminaire cover: equipment circuit board (attached with 3 screws) and LED sources {3, 4}



* S version: Opening of the cover after unscrewing 2 screws {2}