

LUMINAIRES

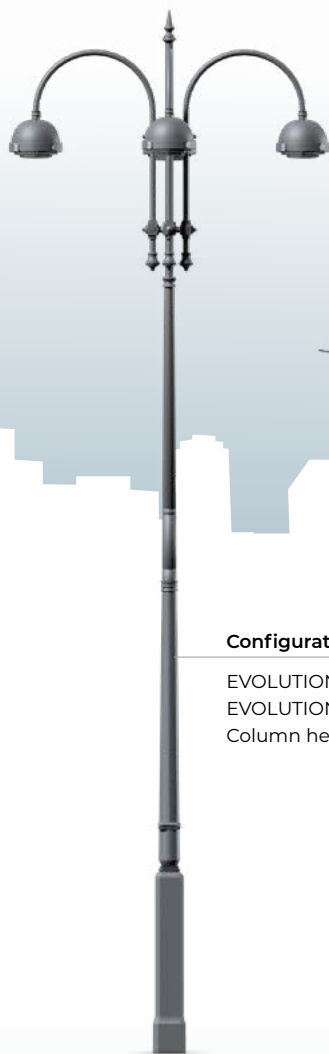
BOLA

Design: ECLATEC



**Configuration**

SPIRALE BA column
Column height: 6 m

**Configuration**

EVOLUTION column
EVOLUTION 1 bracket
Column height: 7 m

**Configuration**

Catenary

BOLA

Design: ECLATEC



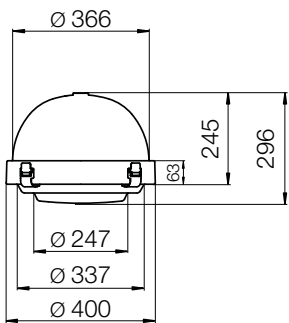
BOLA 40

DESCRIPTION

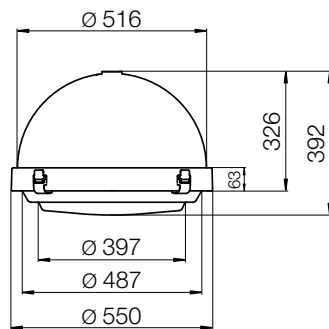
Product name	BOLA 40	BOLA 55
Housing	Frame in injected aluminium Spun aluminium dome	
Bowl	Polycarbonate truncated-cone	
Finish	Polyester powder coating, any colour available	
Impact protection	IK 07	
Ingress Protection	IP66 Extruded silicone gasket Cable gland with anchoring device Breathing system with activated carbon filter	
Dimensions (dia x h)	400 x 296 mm	550 x 392 mm
Weight	7 kg	11 kg
Windage area	0,7 m ²	1 m ²
Materials used	Aluminium 59% Steel 18% Plastic 21% Other 2%	Aluminium 68% Steel 14% Plastic 16% Other 2%
Electrical class	Class I or II	

DIMENSIONS

BOLA 40



BOLA 55





BOLA 55

SOURCES & PHOTOMETRIC DISTRIBUTIONS

	BOLA 40	BOLA 55
Sources	BLS strips	
Colour temperature	Amber*, 2200 K, 2400 K, 2700 K, 3000 K, 4000 K	
Optical Distribution	QUADRALENS : ERS, ERL, ERE, LRS, LRL, PFA, ECa, EPD, EPG	
Backlight shield option	Medium or strong cut-off	
Power supply current	6BLS12 max, up to 750 mA	

*Approx. 1800K, only on BLS12 as standard

E/L/P: Lighting/Luminance/Projection, **R/C/T/F/P:** Road/Circular/Pavement/Beam/Zebra crossing, **E/S/L/A/D/G:** Narrow/Standard/Wide/Asymmetrical/Right/Left



BLS strips

OPTIONS

	BOLA 40	BOLA 55
At the lighting point		
Adjustable current (driver or bottom of the pole)	√	√
Dimming (driver, bottom of the pole or Bluetooth)	√	√
Built-in detection	-	-
Remote detection	√	√
DALI protocol	√	√
Smart-Ready® configuration (ZD4i)	√	√
In a local network		
Communicating detection with pilot wire	√	√
Wireless communication sensing	√	√
Remote management		
WIZARD CMS system	√	√

Details of the functions available on pages 272 to 279 and in the LED synopsis located on under the flap on the front cover

MECHANICAL INTERFACES

SC: Suspended **catenary**SC: Suspended **catenary with Zhaga connector**

SM: suspended with threaded Nippel Ø 27 pdg

MAINTENANCE

Opening and closing	The luminaire cover can be opened without tools using the 4 flaps (1). The luminaire is held in the open position by a safety stay
Source maintenance	Access to the LED sources after removal of the bowl
Lighting equipment maintenance	Access to the equipment board by 1 quarter-turn screw. The module swivels around a hinge. Quick electrical disconnection without tools. Equipment board removable

