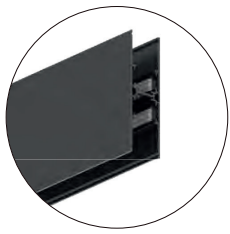


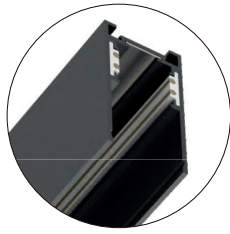




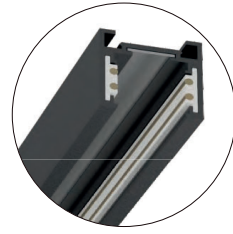
1 H Track



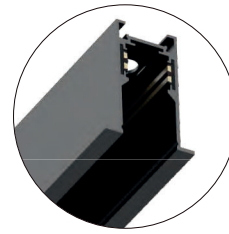
2 Standard Track



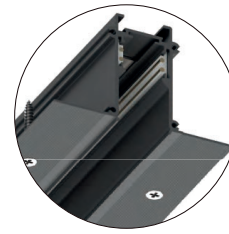
3 Slim Track



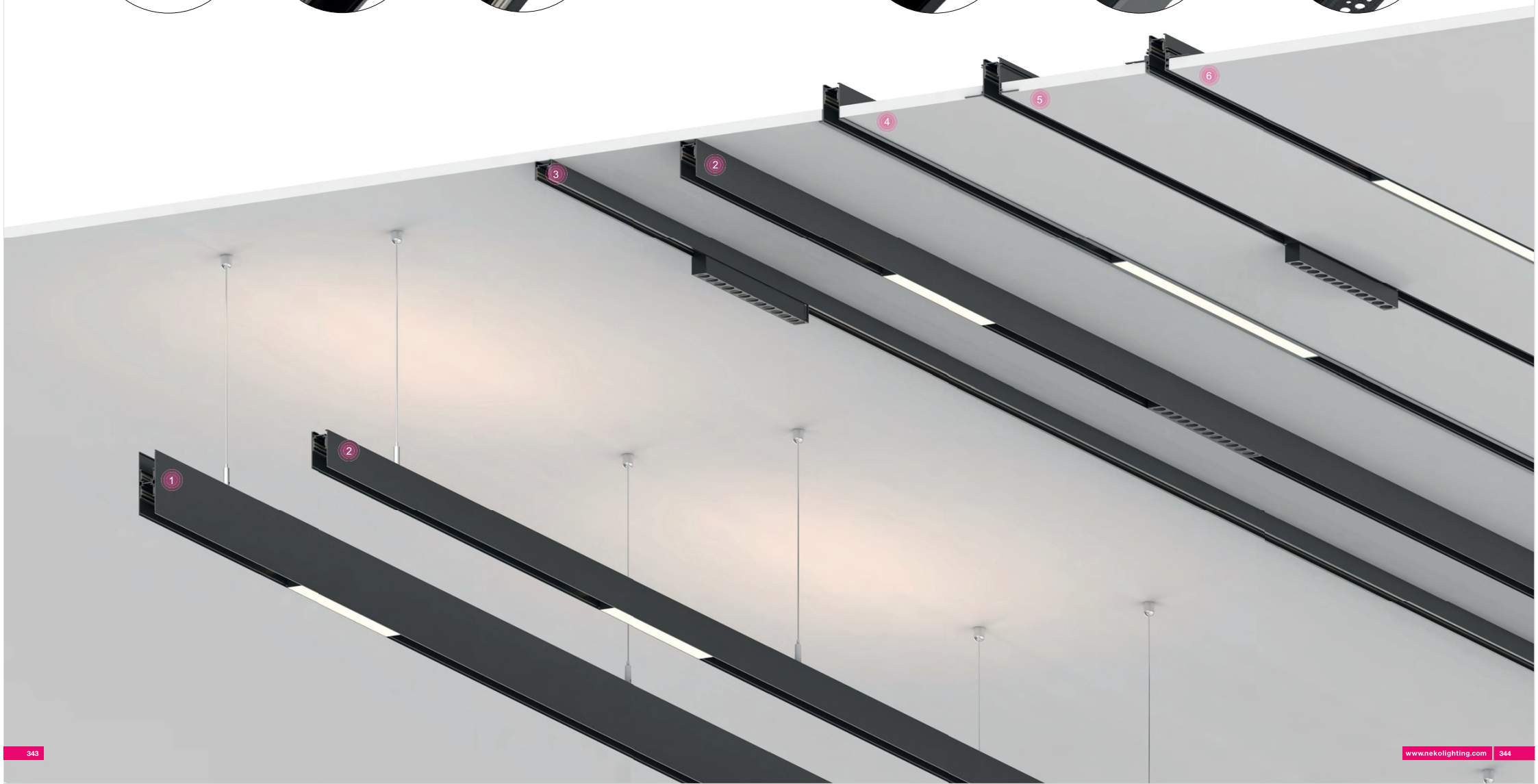
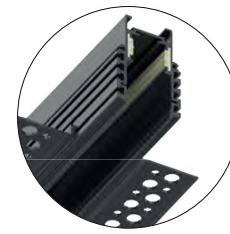
4 Trim Recessed Track



5 Trimless Recessed Track-EI

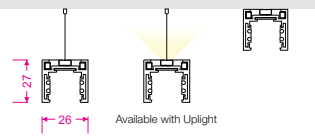


6 Trimless Recessed Track

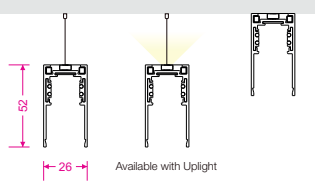




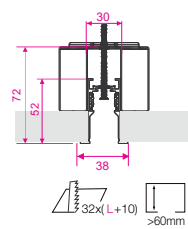
Slim Track



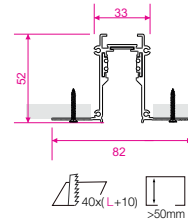
Standard Track



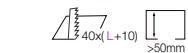
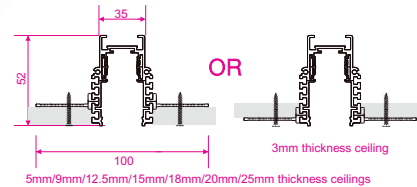
Trim Recessed Track



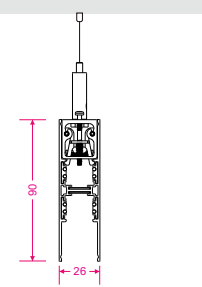
Trimless Recessed Track-EI



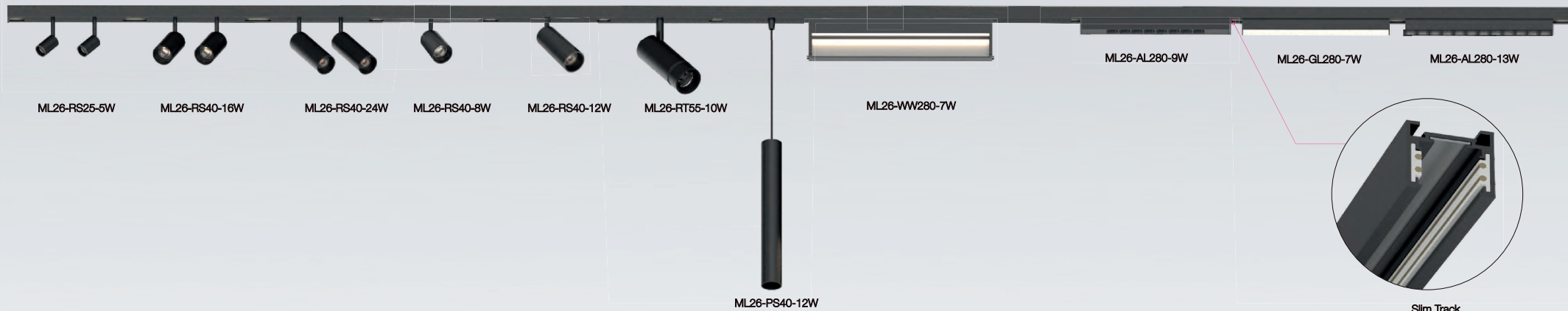
Trimless Recessed Track



H Track



ML26-RS25-3W	ML26-RS25-5W	ML26-RS40-8W	ML26-RS40-16W	ML26-RS40-12W
ML26-FRS72-10W ML26-FRS72-20W	ML26-RS96-9W	ML26-RS40-24W	ML26-RT55-10W	ML26-RS72-26W
ML26-AL190-3W ML26-AL190-7W	ML26-AL280-9W ML26-AL280-13W	ML26-AA315-15W	ML26-SA280-13W	ML26-WW280-7W ML26-WW560-13W
ML26-GL280-7W/10W ML26-GL560-13W/19W ML26-GL840-19W/26W ML26-GL1120-26W	ML26-SG280-7W/10W	ML26-AG315-10W	ML26-PS60-5W	ML26-PAD150-12W
ML26-PS40-12W ML26-PS55-14W	ML26-PB120-10W	ML26-PD300-18W		

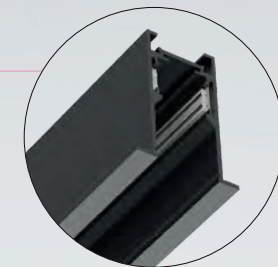


Slim Track

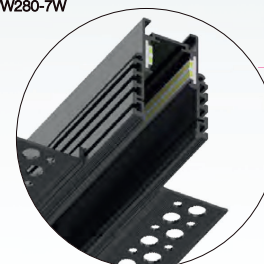
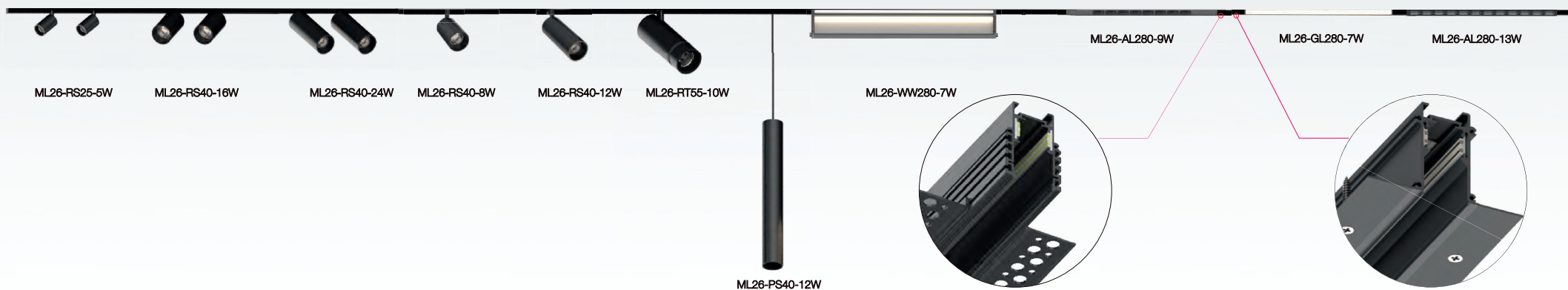
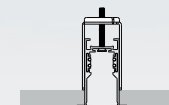


Standard Track

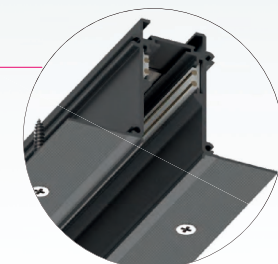




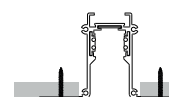
Trim Recessed Track

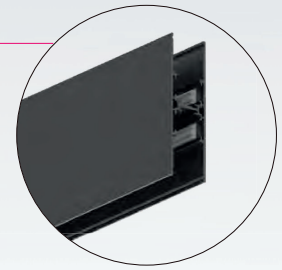
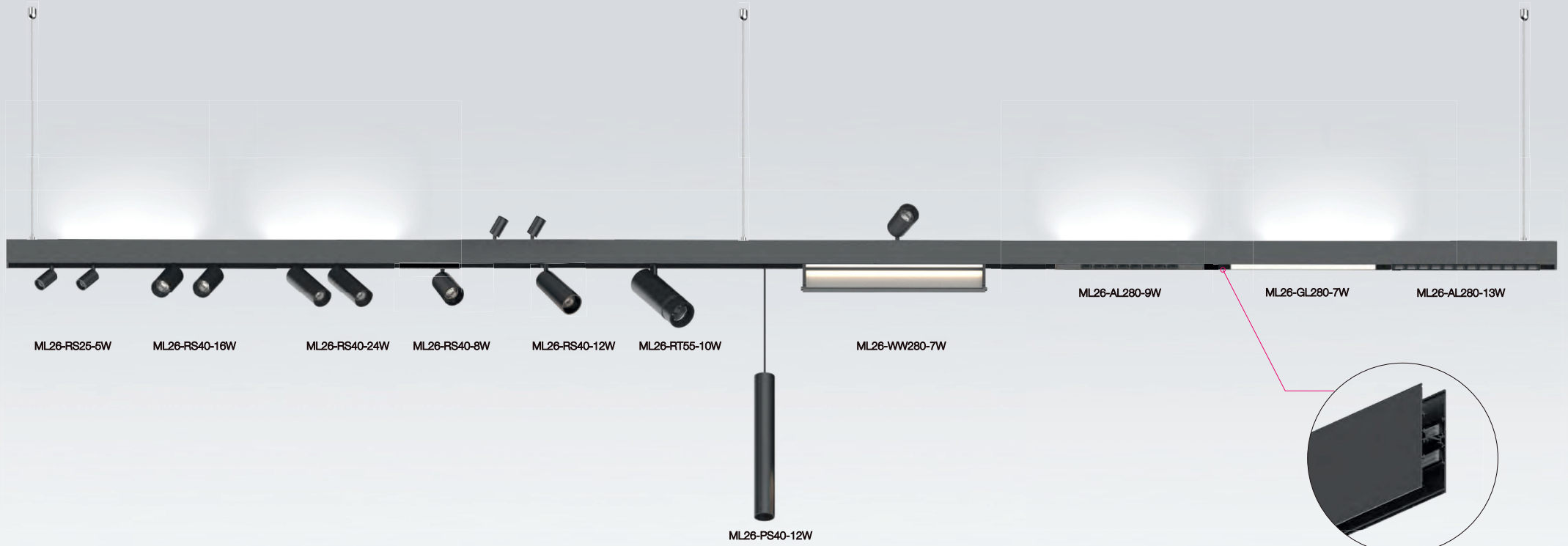


Trimless Recessed Track

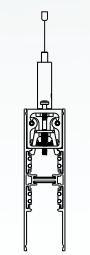


Trimless Recessed Track-EI

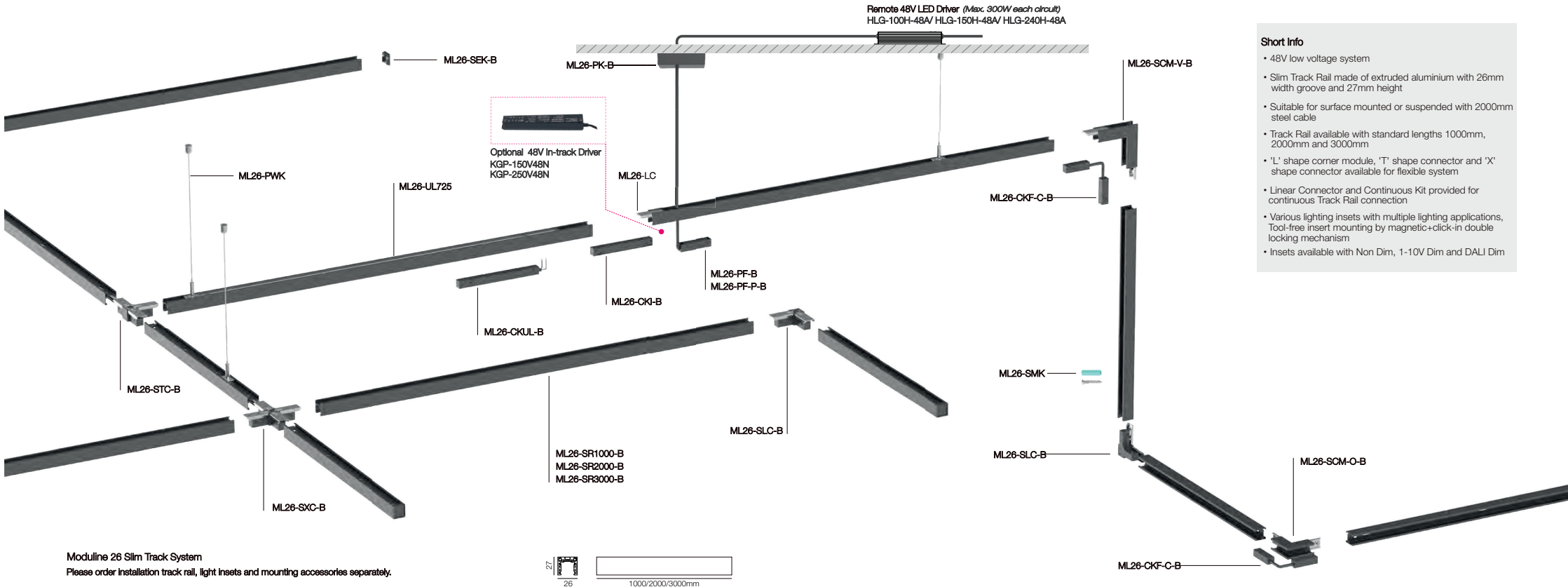




H Track



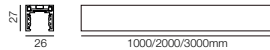
NEKO / MODULINE 26 Linear System
48V Low Voltage Modular Linear System
Slim Track Configuration



- Short Info**
- 48V low voltage system
 - Slim Track Rail made of extruded aluminium with 26mm width groove and 27mm height
 - Suitable for surface mounted or suspended with 2000mm steel cable
 - Track Rail available with standard lengths 1000mm, 2000mm and 3000mm
 - 'L' shape corner module, 'T' shape connector and 'X' shape connector available for flexible system
 - Linear Connector and Continuous Kit provided for continuous Track Rail connection
 - Various lighting insets with multiple lighting applications, Tool-free insert mounting by magnetic+click-in double locking mechanism
 - Insets available with Non Dim, 1-10V Dim and DALI Dim

Moduline 26 Slim Track System

Please order installation track rail, light insets and mounting accessories separately.



Slim Track System Installation Track Rail | for surface or pendant mounting

Tracks can be shortened on site	Code/ Model (Black-Standard)	Code/ Model (White-Option)
L x W x H : 1000 x 26 x 27mm	ML26-SR1000-B	ML26-SR1000-W
L x W x H : 2000 x 26 x 27mm	ML26-SR2000-B	ML26-SR2000-W
L x W x H : 3000 x 26 x 27mm	ML26-SR3000-B	ML26-SR3000-W

*Track Rail including endcaps.

Accessories of Slim Track System

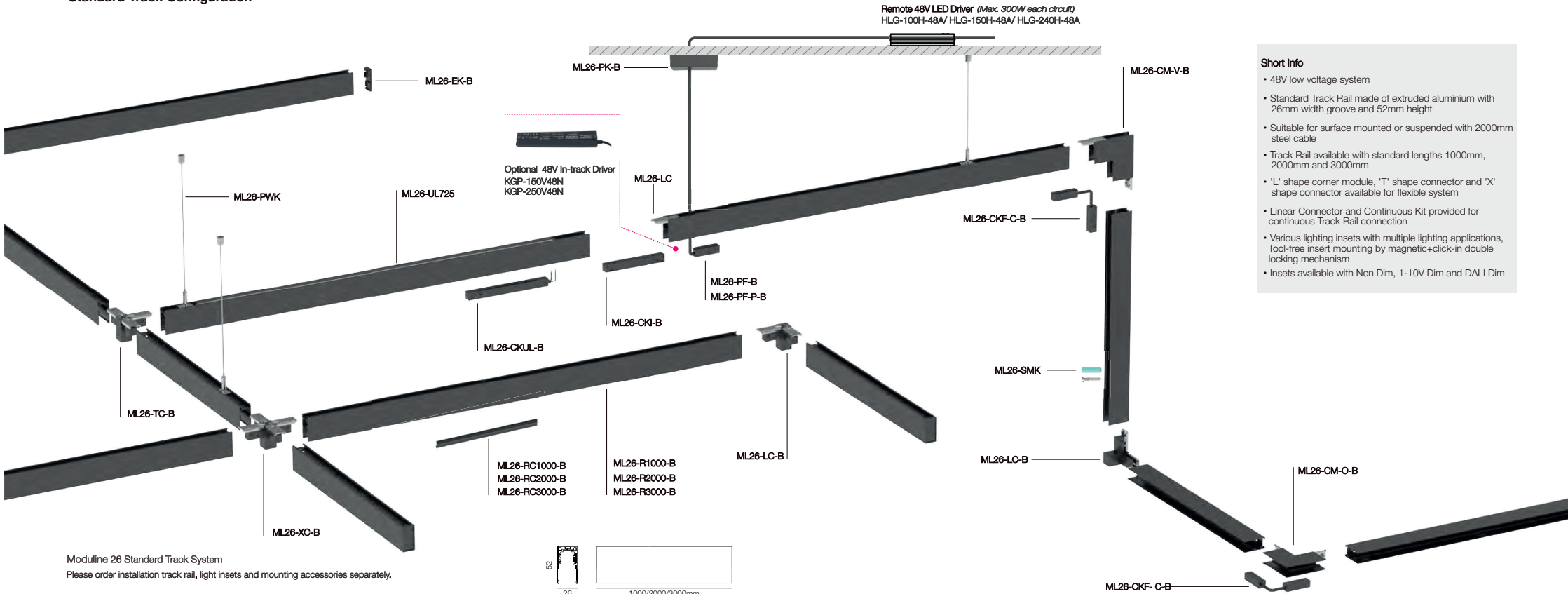
Vertical 'L' Shape Corner Module-Inner, 80 x 80mm	ML26-SCM-V-B	ML26-SCM-V-W
Vertical 'L' Shape Corner Module-Outer, 80 x 80mm	ML26-SCM-V-O-B	ML26-SCM-V-O-W
'L' Shape Connector Set, 26 x 26mm	ML26-SLC-B	ML26-SLC-W
'T' Shape Connector Set, 26 x 26mm	ML26-STC-B	ML26-STC-W
'X' Shape Connector Set, 26 x 26mm	ML26-SXC-B	ML26-SXC-W
Endcap Kit (2pcs/ set) of Slim Track Rail	ML26-SEK-B	ML26-SEK-W
Power Feeder Unit with feeder cables 500mm for surface mounted	ML26-PF-B	ML26-PF-W
Power Feeder Unit with feeder cables 2000mm for pendant	ML26-PF-P-B	ML26-PF-P-W
Linear Connector with screws	ML26-LC	ML26-LC
Straight Continuous Kit*, Electrical	ML26-CKI-B	ML26-CKI-W
Flexible Continuous Kit*, Electrical	ML26-CKF-C-B	ML26-CKF-C-W
Surface mounted installation kit, 1 set for 1000mm track	ML26-SMK	ML26-SMK
Moduline 26 Pendant Installation Kits, with 1pcs Ceiling Box & 2pcs Pendant Wire (2000mm) Kits	ML26-PK-B	ML26-PK-W
Pendant Wire Kit, Wire in 2000mm Length, 2pcs/ set for 1000mm Track	ML26-PWK	ML26-PWK
48V In-track Driver, KGP48V Constant Voltage 150W LED Driver, Black	KGP-150V48N	
48V In-track Driver, KGP48V Constant Voltage 250W LED Driver, Black	KGP-250V48N	
48V Remote Driver, Meanwell 48V Constant Voltage 100W LED Driver	HLG-100H-48A	
48V Remote Driver, Meanwell 48V Constant Voltage 150W LED Driver	HLG-150H-48A	
48V Remote Driver, Meanwell 48V Constant Voltage 240W LED Driver	HLG-240H-48A	

*Continuous Kit needs to be used together with Linear Connector as a set.

Insets

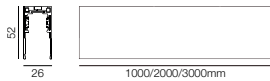
<p>Spotlight</p> <p>● Page 371-375</p>	<p>Pendant Spotlight</p> <p>● Page 393-394</p>
<p>Accent Light</p> <p>● Page 385-388</p>	
<p>General Light</p> <p>● Page 389-392</p>	
<p>Wall Wash Light</p> <p>● Page 401-402</p>	

NEKO / MODULINE 26 Linear System
48V Low Voltage Modular Linear System
Standard Track Configuration



- Short Info**
- 48V low voltage system
 - Standard Track Rail made of extruded aluminium with 26mm width groove and 52mm height
 - Suitable for surface mounted or suspended with 2000mm steel cable
 - Track Rail available with standard lengths 1000mm, 2000mm and 3000mm
 - 'L' shape corner module, 'T' shape connector and 'X' shape connector available for flexible system
 - Linear Connector and Continuous Kit provided for continuous Track Rail connection
 - Various lighting insets with multiple lighting applications, Tool-free insert mounting by magnetic+click-in double locking mechanism
 - Insets available with Non Dim, 1-10V Dim and DALI Dim

Moduline 26 Standard Track System
 Please order installation track rail, light insets and mounting accessories separately.



Standard Track System Installation Track Rail | for surface or pendant mounting

Tracks can be shortened on site	Code/ Model (Black-Standard)	Code/ Model (White-Option)
L x W x H : 1000 x 26 x 52mm	ML26-R1000-B	ML26-R1000-W
L x W x H : 2000 x 26 x 52mm	ML26-R2000-B	ML26-R2000-W
L x W x H : 3000 x 26 x 52mm	ML26-R3000-B	ML26-R3000-W

*Track Rail including endcaps.


Accessories of Slim Track System

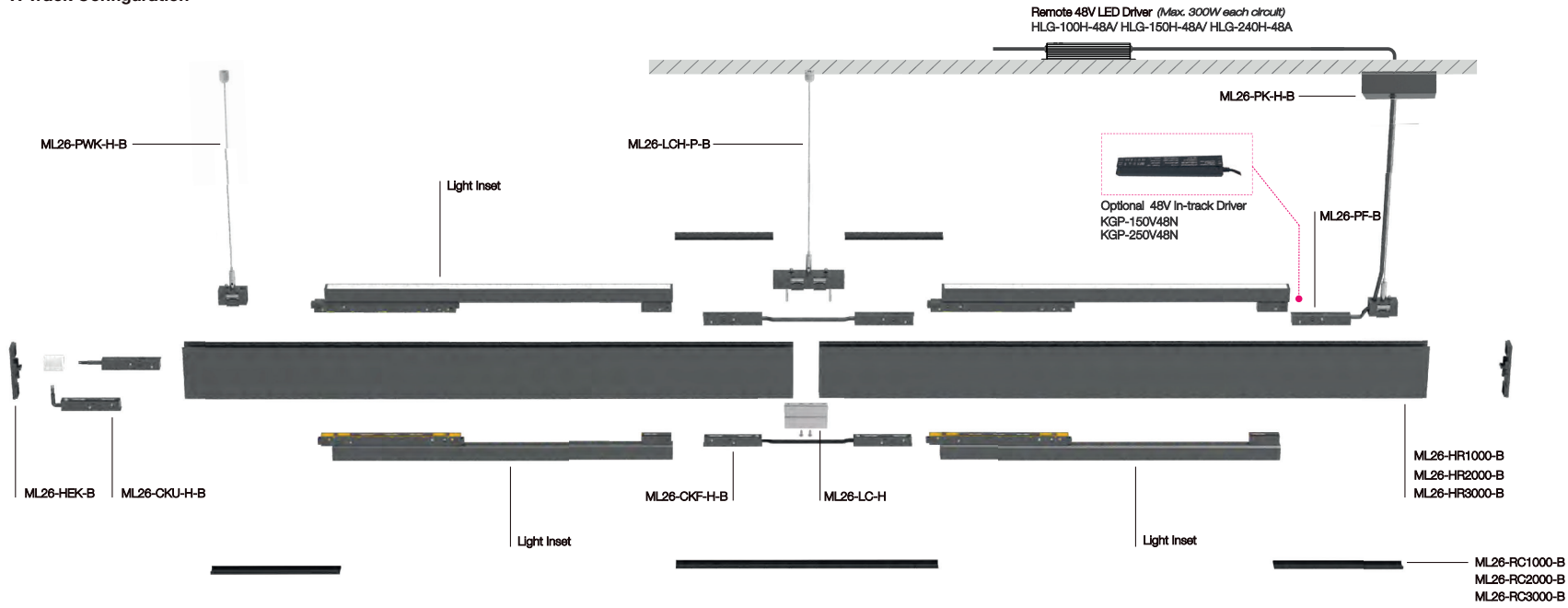
Vertical 'L' Shape Corner Module-Inner, 80 x 80mm	ML26-CM-V-B	ML26-CM-V-W
Vertical 'L' Shape Corner Module-Outer, 80 x 80mm	ML26-CM-V-O-B	ML26-CM-V-O-W
'L' Shape Connector Set, 26 x 26mm	ML26-LC-B	ML26-LC-W
'T' Shape Connector Set, 26 x 26mm	ML26-TC-B	ML26-TC-W
'X' Shape Connector Set, 26 x 26mm	ML26-XC-B	ML26-XC-W
Endcap Kit (2pcs/ set) of Slim Track Rail	ML26-EK-B	ML26-EK-W
Power Feeder Unit with feeder cables 500mm for surface mounted	ML26-PF-B	ML26-PF-W
Power Feeder Unit with feeder cables 2000mm for pendant	ML26-PF-P-B	ML26-PF-P-W
Linear Connector with screws	ML26-LC	ML26-LC
Straight Continuous Kit*, Electrical	ML26-CKI-B	ML26-CKI-W
Flexible Continuous Kit*, Electrical	ML26-CKF-C-B	ML26-CKF-C-W
Surface mounted installation kit, 1set for 1000mm track	ML26-SMK	ML26-SMK
Moduline 26 Pendant Installation Kits, with 1pcs Ceiling Box & 2pcs Pendant Wire (2000mm) Kits	ML26-PK-B	ML26-PK-W
Pendant Wire Kit, Wire in 2000mm Length, 2pcs/ set for 1000mm Track	ML26-PWK	ML26-PWK
Track Rail Cover 1000mm/2000mm/3000mm, can be shortened at site	ML26-RC1000-B	ML26-RC1000-W
48V In-track Driver, KGP48V Constant Voltage 150W LED Driver, Black	KGP-150V48N	
48V In-track Driver, KGP48V Constant Voltage 250W LED Driver, Black	KGP-250V48N	
48V Remote Driver, Meanwell 48V Constant Voltage 100W LED Driver	HLG-100H-48A	
48V Remote Driver, Meanwell 48V Constant Voltage 150W LED Driver	HLG-150H-48A	
48V Remote Driver, Meanwell 48V Constant Voltage 240W LED Driver	HLG-240H-48A	

*Continuous Kit needs to be used together with Linear Connector as a set.

Insets



NEKO / MODULINE 26 Linear System 
48V Low Voltage Modular Linear System
H Track Configuration



Short Info

- 48V low voltage system
- H Track Rail made of extruded aluminium with 26mm width groove and 90mm height
- Suitable for surface mounted or suspended with 2000mm steel cable
- Track Rail available with standard lengths 1000mm, 2000mm and 3000mm
- Linear Connector and Continuous Kit provided for continuous Track Rail connection
- Various lighting insets with multiple lighting applications, Tool-free insert mounting by magnetic+click-in double locking mechanism
- Insets available with Non Dim, 1-10V Dim and DALI Dim

Moduline 26 H Track System

Please order installation track rail, light insets and mounting accessories separately.

Standard Track System Installation Track Rail | for surface or pendant mounting

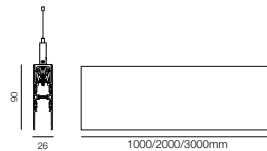
Tracks can be shortened on site	Code/ Model (Black-Standard)	Code/ Model (White-Option)
L x W x H : 1000 x 26 x 90mm	ML26-HR1000-B	ML26-HR1000-W
L x W x H : 2000 x 26 x 90mm	ML26-HR2000-B	ML26-HR2000-W
L x W x H : 3000 x 26 x 90mm	ML26-HR3000-B	ML26-HR3000-W

*Track Rail including endcaps.

Accessories of Slim Track System

Endcap Kit (2pcs/ set) of H Track Rail	ML26-HEK-B	ML26-HEK-W
Power Feeder Unit with feeder cables 2000mm for pendant	ML26-PF-P-B	ML26-PF-P-W
Flexible Continuous Kit, Electrical, for Up Track and Down Track connection	ML26-CKU-H-B	ML26-CKU-H-W
Flexible Continuous Kit, Electrical, for straight connection	ML26-CKF-H-B	ML26-CKF-H-W
Linear Connector with Pendant Kit of H Track System	ML26-LCH-P-B	ML26-LCH-P-W
Linear Connector Kit of H Track System*	ML26-LC-H	ML26-LC-H
Moduline 26 Pendant Installation Kits, with 1pcs Ceiling Box & 1pcs H Track Pendant Wire (2000mm) Kits	ML26-PK-H-B	ML26-PK-H-W
H Track Pendant Wire Kit, Wire in 2000mm Length, 2pcs/ set for 1000mm Track	ML26-PWK-H-B	ML26-PWK-H-W
Track Rail Cover 1000mm/2000mm/3000mm, can be shortened at site	ML26-RC1000-B	ML26-RC1000-W
48V In-track Driver, KGP48V Constant Voltage 150W LED Driver, Black	KGP-150V48N	
48V In-track Driver, KGP48V Constant Voltage 250W LED Driver, Black	KGP-250V48N	
48V Remote Driver, Meanwell 48V Constant Voltage 100W LED Driver	HLG-100H-48A	
48V Remote Driver, Meanwell 48V Constant Voltage 150W LED Driver	HLG-150H-48A	
48V Remote Driver, Meanwell 48V Constant Voltage 240W LED Driver	HLG-240H-48A	

*Linear Connector Kit needs to be used together with Linear Connector with Pendant Kit

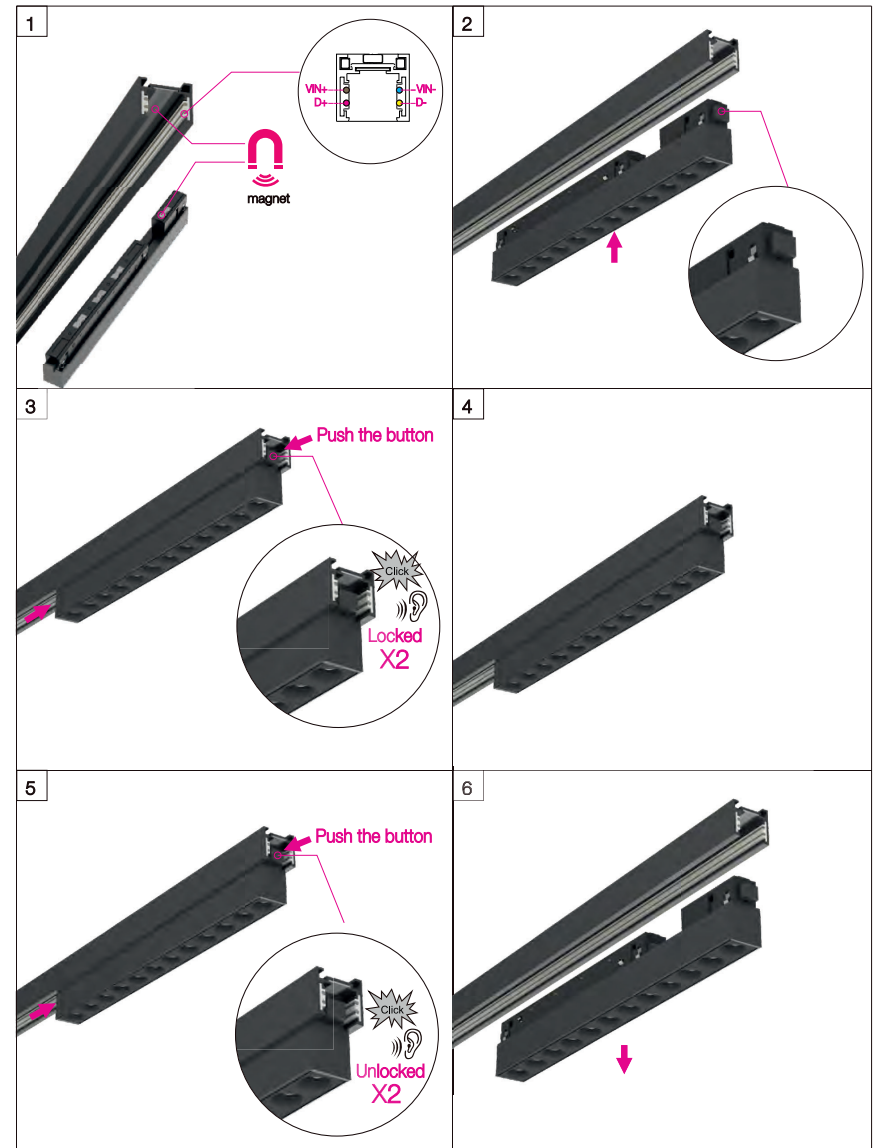


Insets

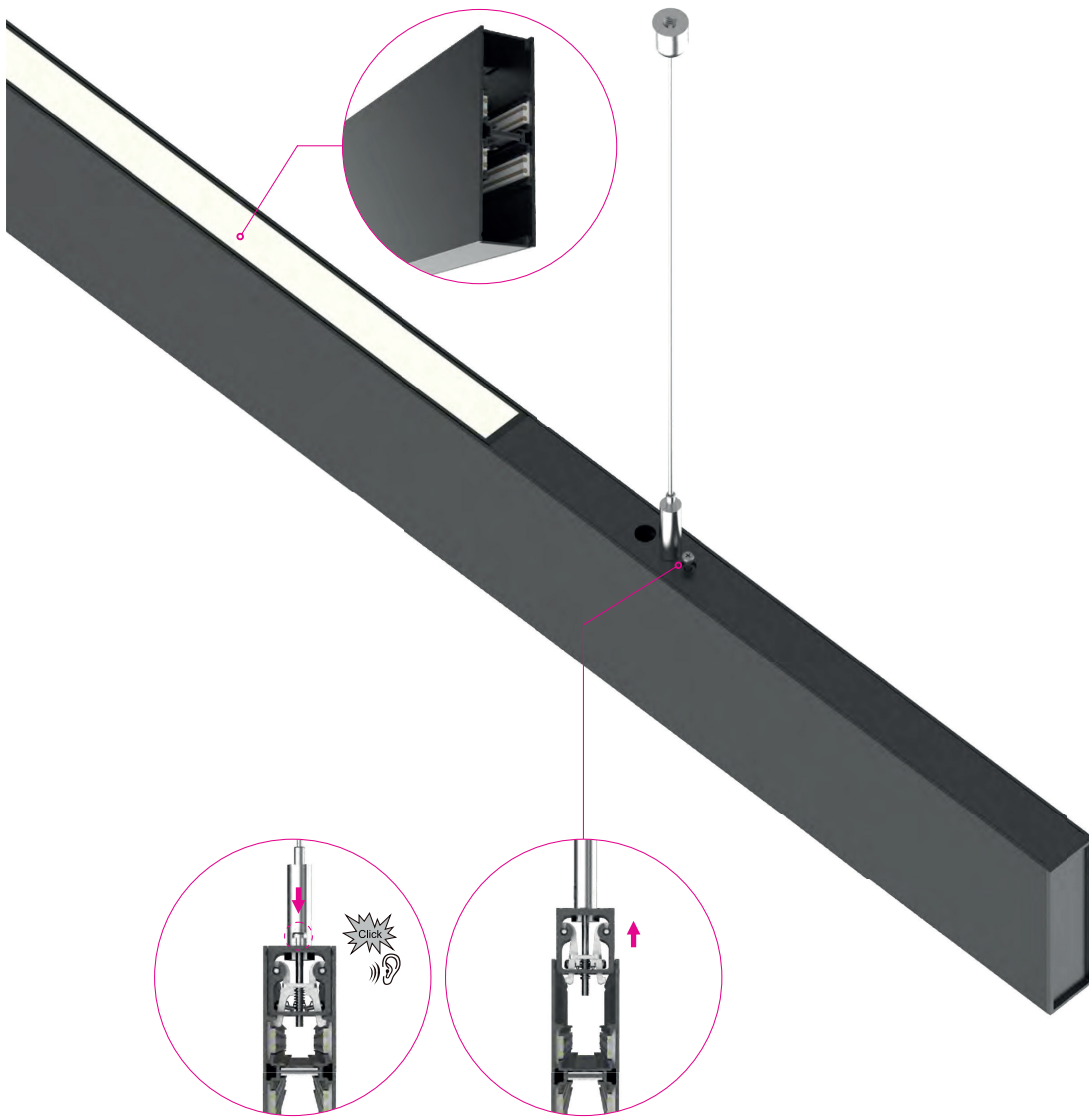




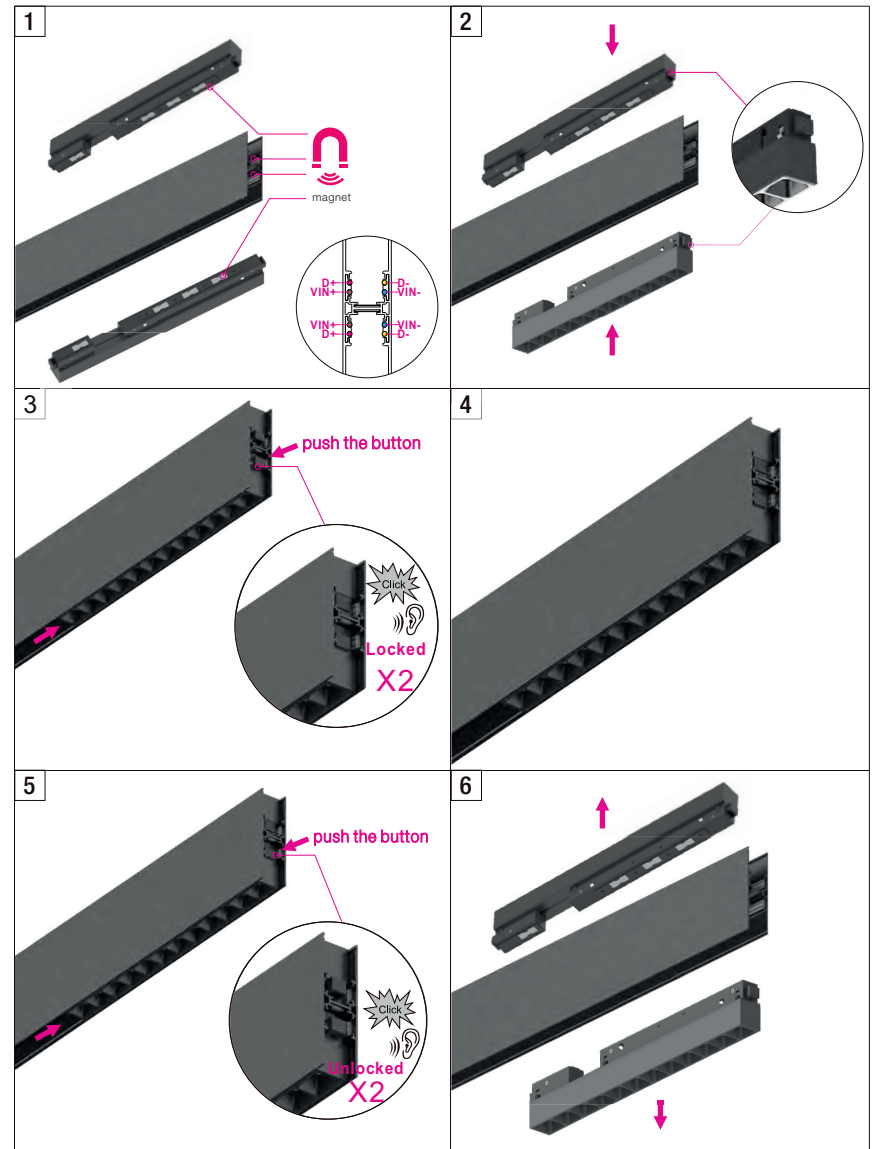
Installation

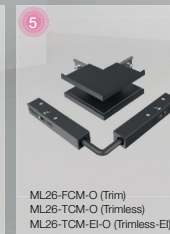


·Tool-free insert mounting by magneto+click-in double locking mechanism

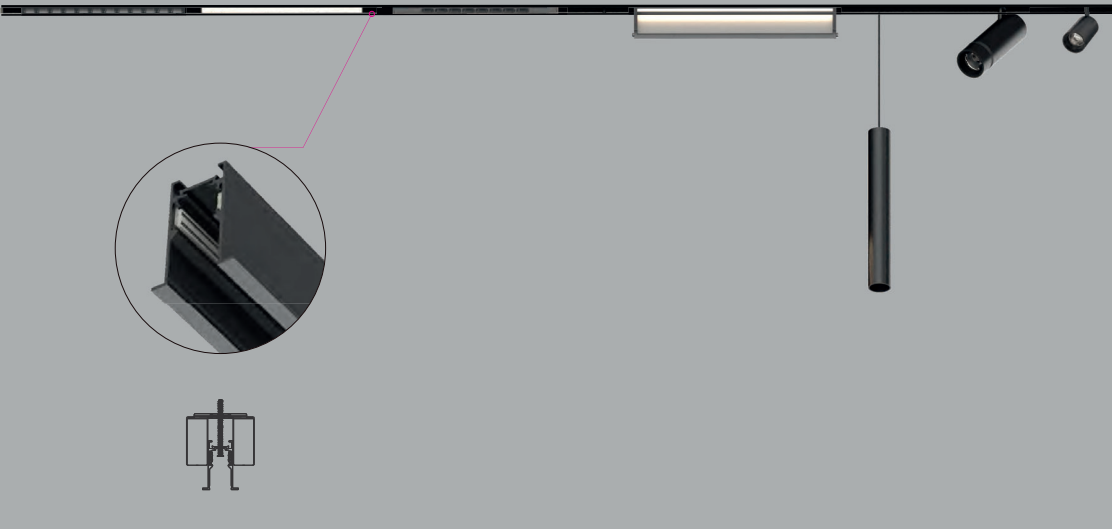


Installation





NEKO / MODULINE 26 Linear System
 48V Low Voltage Modular Linear System
 Trim Recessed Track System



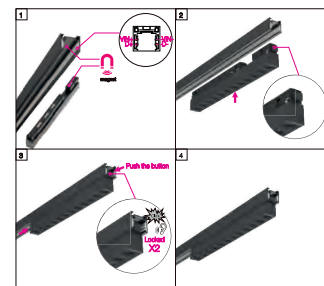
Short info

- 48V low voltage system
- Trim Recessed Track Rail Version made of extruded aluminium with 26mm width groove and 52mm height
- Mounted from inner track, suitable for all thickness ceiling heights
- Track Rail available with standard lengths 1000mm, 2000mm and 3000mm
- 'L' shape corner module, 'T' shape connector and 'X' shape connector available for flexible system
- Linear Connector and Continuous Kit provided for continuous Track Rail connection
- Various lighting insets with multiple lighting applications, Tool-free insert mounting by magnetic-click-in double locking mechanism
- Insets available with Non Dim, 1-10V Dim and DALI Dim

Insets



Features



-Magnetic-click-in double locking mechanism

Short info

Moduline 26 Trim Recessed Track System



Moduline 26 Trim Recessed Track System

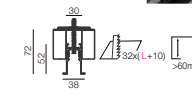
Please order installation track rail, light insets and mounting accessories separately.

Electrical

- Non Dim
- 1-10V Dim
- DALI Dim

Fixture Colour

Black White(Optional)



Trim Recessed Track System Version Installation Track Rail

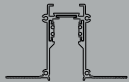
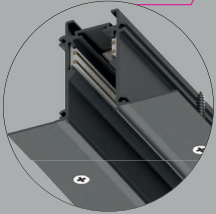
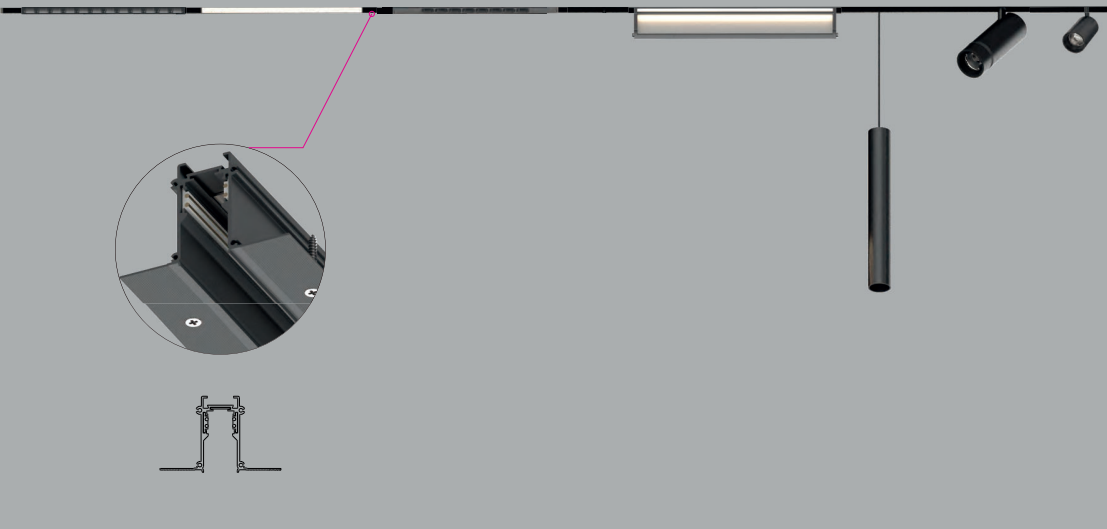
L (mm)	Description	Code/ Model (Black-Standard)	Code/ Model (White-Option)
1000	Trim Recessed Track Rail	ML26-FR1000-B	ML26-FR1000-W
2000	Trim Recessed Track Rail	ML26-FR2000-B	ML26-FR2000-W
3000	Trim Recessed Track Rail	ML26-FR3000-B	ML26-FR3000-W

*Track Rail including endcaps.

Accessories of Trim Recessed Track System

L (mm)	Output (mm)	Description	Code/ Model (Black-Standard)	Code/ Model (White-Option)
80x80	(32x28)+(32x28)	Vertical 'L' shape corner module-Inner	ML26-FCM-V-B	ML26-FCM-V-W
80x80	(32x80)+(32x80)	Vertical 'L' shape corner module-Outer	ML26-FCM-O-B	ML26-FCM-O-W
80x80	(32x77)+(32x45)	Horizontal 'L' shape corner module	ML26-FCM-B	ML26-FCM-W
120x80	(32x120)+(32x45)	'T' Shape Connector Set	ML26-FTC-B	ML26-FTC-W
120x120	(32x120)+(32x120)	'X' Shape Connector Set	ML26-FXC-B	ML26-FXC-W
		Flexible Continuous Kit, Electrical	ML26-CKF-C-B	ML26-CKF-C-W
		*For Corner Connection.		
		Trim Recessed Track Rail Mounting Kit, 2pcs/ set	ML26-FIK	ML26-FIK
		Endcap Kit (2pcs/ set) of Trim Recessed Track	ML26-FEK-B	ML26-FEK-W
		Power Feeder Unit with feeder cables 500mm	ML26-PF-B	ML26-PF-W
		Track Rail Cover 1000mm	ML26-RC1000-B	ML26-RC1000-W
		Track Rail Cover 2000mm	ML26-RC2000-B	ML26-RC2000-W
		Track Rail Cover 3000mm	ML26-RC3000-B	ML26-RC3000-W
		*Track Rail Cover can be shortened as desired.		
		Linear Connector with screws	ML26-LC	ML26-LC
		Straight Continuous Kit*, Electrical	ML26-CKI-B	ML26-CKI-W
		*Continuous Kit needs to be used together with Linear Connector as a set.		
		48V In-track Driver, KGP48V Constant Voltage 150W LED Driver, Black	KGP-150V48N	
		48V In-track Driver, KGP48V Constant Voltage 250W LED Driver, Black	KGP-250V48N	
		48V Remote Driver, Meanwell 48V Constant Voltage 100W LED Driver	HLG-100H-48A	
		48V Remote Driver, Meanwell 48V Constant Voltage 150W LED Driver	HLG-150H-48A	
		48V Remote Driver, Meanwell 48V Constant Voltage 240W LED Driver	HLG-240H-48A	

NEKO / MODULINE 26 Linear System
 48V Low Voltage Modular Linear System
 Trimless Recessed Track System-EI
 Easy Installation



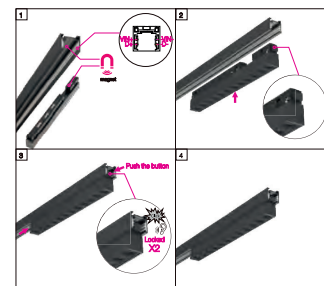
Short info

- 48V low voltage system
- Trimless Recessed Track Rail Easy Installation Version made of extruded aluminium with 26mm width groove and 52mm height
- Mounted on surface, suitable for all thickness ceiling heights
- Track Rail available with standard lengths 1000mm, 2000mm and 3000mm
- 'L' shape corner module, 'T' shape connector and 'X' shape connector available for flexible system
- Linear Connector and Continuous Kit provided for continuous Track Rail connection
- Various lighting insets with multiple lighting applications, Tool-free insert mounting by magnetic+click-in double locking mechanism
- Insets available with Non Dim, 1-10V Dim and DALI Dim

Insets



Features



-Magnetic+click-in double locking mechanism

Short info

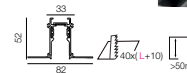
Moduline 26 Trimless Recessed Track System
 Easy Installation Version

Electrical

- Non Dim
- 1-10V Dim
- DALI Dim

Fixture Colour

Black White(Optional)



Moduline 26 Trimless Recessed Track System
 Easy Installation Version

Please order installation track rail, light insets and mounting accessories separately.

Trimless Recessed Track System Easy Installation Version Installation Track Rail

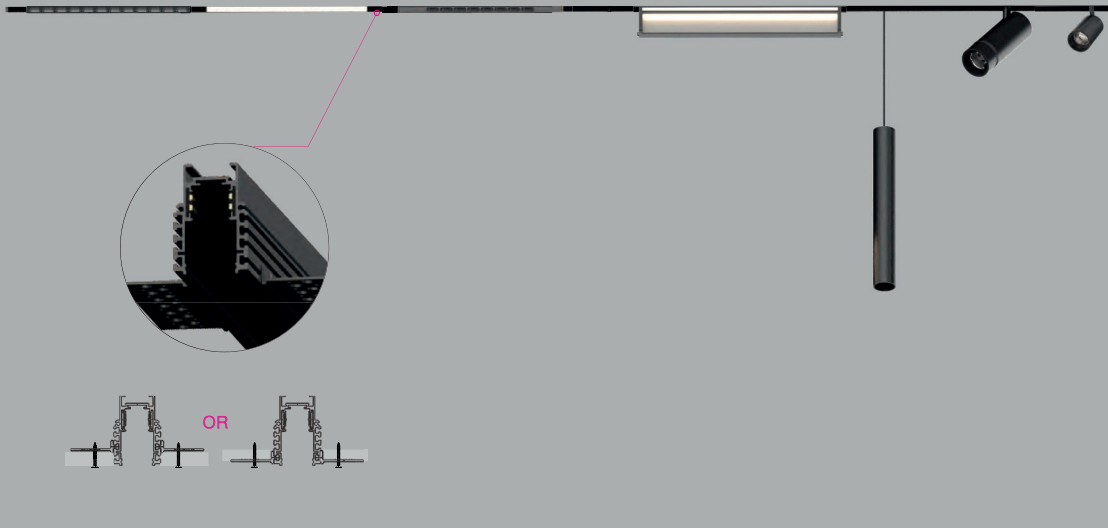
L (mm)	Description	Code/ Model (Black-Standard)	Code/ Model (White-Option)
1000	Trimless Recessed Track Rail-EI	ML26-TR1000-EI-B	ML26-TR1000-EI-W
2000	Trimless Recessed Track Rail-EI	ML26-TR2000-EI-B	ML26-TR2000-EI-W
3000	Trimless Recessed Track Rail-EI	ML26-TR3000-EI-B	ML26-TR3000-EI-W

*Track Rail including endcaps.

Accessories of Easy Installation Version Trimless Recessed Track System

L (mm)	Output (mm)	Description	Code/ Model (Black-Standard)	Code/ Model (White-Option)
100x100	(40x48)+(40x48)	Vertical 'L' shape corner module-Inner	ML26-TCM-EI-V-B	ML26-TCM-EI-V-W
100x100	(40x100)+(40x100)	Vertical 'L' shape corner module-Outer	ML26-TCM-EI-O-B	ML26-TCM-EI-O-W
100x100	(40x80)+(40x40)	Horizontal 'L' shape corner module	ML26-TCM-EI-B	ML26-TCM-EI-W
100x120	(40x120)+(40x40)	'T' Shape Connector Set	ML26-TTC-EI-B	ML26-TTC-EI-W
120x120	(40x120)+(40x120)	'X' Shape Connector Set	ML26-TXC-EI-B	ML26-TXC-EI-W
		Flexible Continuous Kit, Electrical	ML26-CKF-C-B	ML26-CKF-C-W
		*For Corner Connection.		
		Endcap Kit (2pcs/ set) of Trim Recessed Track	ML26-TEK-EI-B	ML26-TEK-EI-W
		Power Feeder Unit with feeder cables 500mm	ML26-PF-B	ML26-PF-W
		Track Rail Cover 1000mm	ML26-RC1000-B	ML26-RC1000-W
		Track Rail Cover 2000mm	ML26-RC2000-B	ML26-RC2000-W
		Track Rail Cover 3000mm	ML26-RC3000-B	ML26-RC3000-W
		*Track Rail Cover can be shortened as desired.		
		Linear Connector with screws	ML26-LC	ML26-LC
		Straight Continuous Kit*, Electrical	ML26-CKI-B	ML26-CKI-W
		*Continuous Kit needs to be used together with Linear Connector as a set.		
		Trimless Recessed Track mounting kit 1set for 1000mm track	ML26-RMK	ML26-RMK
		48V In-track Driver, KGP48V Constant Voltage 150W LED Driver, Black	KGP-150V48N	
		48V In-track Driver, KGP48V Constant Voltage 250W LED Driver, Black	KGP-250V48N	
		48V Remote Driver, Meanwell 48V Constant Voltage 100W LED Driver	HLG-100H-48A	
		48V Remote Driver, Meanwell 48V Constant Voltage 150W LED Driver	HLG-150H-48A	
		48V Remote Driver, Meanwell 48V Constant Voltage 240W LED Driver	HLG-240H-48A	

NEKO / MODULINE 26 Linear System
 48V Low Voltage Modular Linear System
 Trimless Recessed Track System-Ceiling Thickness Adjustable



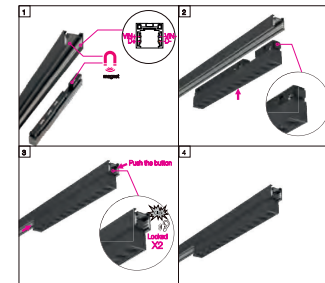
Short Info

- 48V low voltage system
- Trimless Recessed Track Rail Version made of extruded aluminium with 35mm width groove and 52mm height
- Suitable for 3mm/5mm/9mm/12.5mm/15mm/18mm/20mm/25mm thickness ceilings heights
- Track Rail available with standard lengths 1000mm, 2000mm and 3000mm
- 'L' shape corner module, 'T' shape connector and 'X' shape connector available for flexible system
- Linear Connector and Continuous Kit provided for continuous Track Rail connection
- Various lighting insets with multiple lighting applications, Tool-free insert mounting by magnetic-click-in double locking mechanism
- Insets available with Non Dim, 1-10V Dim and DALI Dim

Insets



Features



-Magnetic-click-in double locking mechanism

Short Info

Moduline 26 Trimless Recessed Track System
 Ceiling Thickness Adjustable



Moduline 26 Trimless Recessed Track System
 Ceiling Thickness Adjustable

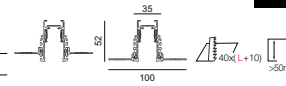
Please order installation track rail, light insets and mounting accessories separately.

Electrical

- Non Dim
- 1-10V Dim
- DALI Dim

Fixture Colour

Black White(Optional)



Trimless Recessed Track System Ceiling Thickness Adjustable Version Installation Track Rail

L (mm)	Description	Code/ Model (Black-Standard)	Code/ Model (White-Option)
1000	Trimless Recessed Track Rail	ML26-TAR1000-B	ML26-TAR1000-W
2000	Trimless Recessed Track Rail	ML26-TAR2000-B	ML26-TAR2000-W
3000	Trimless Recessed Track Rail	ML26-TAR3000-B	ML26-TAR3000-W

*Track Rail including endcaps.

Accessories of Ceiling Thickness Adjustable Trimless Recessed Track System

L (mm)	Output (mm)	Description	Code/ Model (Black-Standard)	Code/ Model (White-Option)
80x80	(40x28)+(40x28)	Vertical 'L' shape corner module-Inner	ML26-TACM-V-B	ML26-TACM-V-W
80x80	(40x80)+(40x80)	Vertical 'L' shape corner module-Outer	ML26-TACM-O-B	ML26-TACM-O-W
80x80	(40x82)+(40x42)	Horizontal 'L' shape corner module	ML26-TACM-B	ML26-TACM-W
80x120	(40x120)+(40x42)	'T' Shape Connector Set	ML26-TATC-B	ML26-TATC-W
120x120	(40x120)+(40x120)	'X' Shape Connector Set	ML26-TAXC-B	ML26-TAXC-W
		Flexible Continuous Kit, Electrical *For Corner Connection.	ML26-CKF-C-B	ML26-CKF-C-W
		Endcap Kit (2pcs/ set) of Trim Recessed Track	ML26-TAEK-B	ML26-TAEK-W
		Power Feeder Unit with feeder cables 500mm	ML26-PF-B	ML26-PF-W
		Track Rail Cover 1000mm	ML26-RC1000-B	ML26-RC1000-W
		Track Rail Cover 2000mm	ML26-RC2000-B	ML26-RC2000-W
		Track Rail Cover 3000mm	ML26-RC3000-B	ML26-RC3000-W
		*Track Rail Cover can be shortened as desired.		
		Linear Connector with screws	ML26-LC	ML26-LC
		Straight Continuous Kit*, Electrical *Continuous Kit needs to be used together with Linear Connector as a set.	ML26-CKI-B	ML26-CKI-W
		Trimless Recessed installation kit 1set for 1000mm track	ML26-TAIK	ML26-TAIK
		48V In-track Driver, KGP48V Constant Voltage 150W LED Driver, Black	KGP-150V48N	
		48V In-track Driver, KGP48V Constant Voltage 250W LED Driver, Black	KGP-250V48N	
		48V Remote Driver, Meanwell 48V Constant Voltage 100W LED Driver	HLG-100H-48A	
		48V Remote Driver, Meanwell 48V Constant Voltage 150W LED Driver	HLG-150H-48A	
		48V Remote Driver, Meanwell 48V Constant Voltage 240W LED Driver	HLG-240H-48A	

NEKO / MODULINE 26 Linear System
48V Low Voltage Modular Linear System
Spotlight Inset



ML26-RS25-3W
Single Spot



ML26-RS25-5W
Double Spot

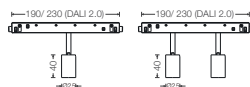
NEKO / MODULINE 26 Linear System
48V Low Voltage Modular Linear System
Spotlight Inset



ML26-RS40-8W
Single Spot



ML26-RS40-16W
Double Spot



ML26-RS25-3W



ML26-RS25-5W

LED Power	System Power	LED Voltage	CRI	CCT	Beam	LED Output	System Output	Code
2W	3W	48 V	90	2700K	18°	220lm	170lm	MLR0-9271803F-BB
					30°	220lm	170lm	MLR0-9273003F-BB
					45°	220lm	170lm	MLR0-9274503F-BB
			3000K	18°	230lm	180lm	MLR0-9301803F-BB	
				30°	230lm	180lm	MLR0-9303003F-BB	
				45°	230lm	180lm	MLR0-9304503F-BB	
			4000K	18°	250lm	190lm	MLR0-9401803F-BB	
				30°	250lm	190lm	MLR0-9403003F-BB	
				45°	250lm	190lm	MLR0-9404503F-BB	

Code Remark: F(ON-OFF) A=A(1-10V Dim) D=D(DALI Dim)

LED Power	System Power	LED Voltage	CRI	CCT	Beam	LED Output	System Output	Code
4W	5W	48 V	90	2700K	18°	420lm	330lm	MLR1-9271805F-BB
					30°	420lm	330lm	MLR1-9273005F-BB
					45°	420lm	330lm	MLR1-9274505F-BB
			3000K	18°	450lm	350lm	MLR1-9301805F-BB	
				30°	450lm	350lm	MLR1-9303005F-BB	
				45°	450lm	350lm	MLR1-9304505F-BB	
			4000K	18°	500lm	380lm	MLR1-9401805F-BB	
				30°	500lm	380lm	MLR1-9403005F-BB	
				45°	500lm	380lm	MLR1-9404505F-BB	

Code Remark: F(ON-OFF) A=A(1-10V Dim) D=D(DALI Dim)

Optional



Brushed Gold

White



ML26-RS40-8W



ML26-RS40-16W

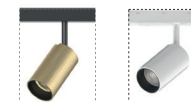
LED Power	System Power	LED Voltage	CRI	CCT	Beam	LED Output	System Output	Code
7.5W	8W	48 V	90	2700K	18°	700lm	550lm	MLR2-9271808F-BB
					30°	700lm	550lm	MLR2-9273008F-BB
					45°	700lm	550lm	MLR2-9274508F-BB
			3000K	18°	750lm	580lm	MLR2-9301808F-BB	
				30°	750lm	580lm	MLR2-9303008F-BB	
				45°	750lm	580lm	MLR2-9304508F-BB	
			4000K	18°	800lm	640lm	MLR2-9401808F-BB	
				30°	800lm	640lm	MLR2-9403008F-BB	
				45°	800lm	640lm	MLR2-9404508F-BB	

Code Remark: F(ON-OFF) A=A(1-10V Dim) D=D(DALI Dim)

LED Power	System Power	LED Voltage	CRI	CCT	Beam	LED Output	System Output	Code
15W	16W	48 V	90	2700K	18°	1400lm	1000lm	MLR3-9271816F-BB
					30°	1400lm	1000lm	MLR3-9273016F-BB
					45°	1400lm	800lm	MLR3-9274516F-BB
			3000K	18°	1500lm	1100lm	MLR3-9301816F-BB	
				30°	1500lm	1100lm	MLR3-9303016F-BB	
				45°	1500lm	850lm	MLR3-9304516F-BB	
			4000K	18°	1600lm	1200lm	MLR3-9401816F-BB	
				30°	1600lm	1200lm	MLR3-9403016F-BB	
				45°	1600lm	460lm	MLR3-9404516F-BB	

Code Remark: F(ON-OFF) A=A(1-10V Dim) D=D(DALI Dim)

Optional



Brushed Gold

White

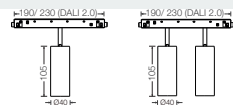
NEKO / MODULINE 26 Linear System
48V Low Voltage Modular Linear System
Spotlight Inset



ML26-RS40-12W
Single Spot



ML26-RS40-24W
Double Spot



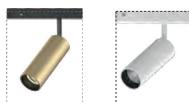
ML26-RS40-12W



ML26-RS40-24W

LED Power	System Power	LED Voltage	CRI	CCT	Beam	LED Output	System Output	Code					
11W / 24W	12W	48 V	90	2700K	18°	1000lm	700lm	MLR4-9271812F-BB					
					30°	1000lm	700lm	MLR4-9273012F-BB					
					45°	1000lm	550lm	MLR4-9274512F-BB					
					3000K	18°	1100lm	750lm	MLR4-9301812F-BB				
					30°	1100lm	750lm	MLR4-9303012F-BB					
					45°	1100lm	600lm	MLR4-9304512F-BB					
					4000K	18°	1200lm	800lm	MLR4-9401812F-BB				
					30°	1200lm	800lm	MLR4-9403012F-BB					
					45°	1200lm	650lm	MLR4-9404512F-BB					
					Code Remark: F=(ON-OFF) A=A(1-10V Dim) D=D(DALI Dim)								
					22W	24W	48 V	90	2700K	18°	2000lm	1400lm	MLR5-9271824F-BB
										30°	2000lm	1400lm	MLR5-9273024F-BB
45°	2000lm	1100lm	MLR5-9274524F-BB										
3000K	18°	2200lm	1500lm	MLR5-9301824F-BB									
30°	2200lm	1500lm	MLR5-9303024F-BB										
45°	2200lm	1200lm	MLR5-9304524F-BB										
4000K	18°	2400lm	1600lm	MLR5-9401824F-BB									
30°	2400lm	1600lm	MLR5-9403024F-BB										
45°	2400lm	1300lm	MLR5-9404524F-BB										
Code Remark: F=(ON-OFF) A=A(1-10V Dim) D=D(DALI Dim)													

Optional



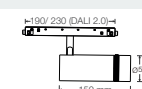
Brushed Gold

White

NEKO / MODULINE 26 Linear System
48V Low Voltage Modular Linear System
Spotlight Inset



ML26-RT55-10W
Zooming Spot




ML26-RT55-10W

LED Power	System Power	LED Voltage	CRI	CCT	Beam	LED Output	System Output	Code	
9W	10W	48 V	90	2700K	20°-40°	1200lm	1000lm	MLR6-927Z410F-BB	
					35°-60°	1200lm	950lm	MLR6-927Z610F-BB	
					3000K	20°-40°	1300lm	1100lm	MLR6-930Z410F-BB
					35°-60°	1300lm	1000lm	MLR6-930Z610F-BB	
					4000K	20°-40°	1400lm	1200lm	MLR6-940Z410F-BB
					35°-60°	1400lm	1100lm	MLR6-940Z610F-BB	
Code Remark: F=(ON-OFF) A=A(1-10V Dim) D=D(DALI Dim)									

Optional



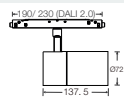
White

NEKO / MODULINE 26 Linear System 
48V Low Voltage Modular Linear System
Spotlight Inset



ML26-RS72-19W
 ML26-RS72-26W
 Single Spot

19W 26W CRI90 2700K 3000K 4000K  CITIZEN 60,000HOUR L80B10 UGR < 19 IP20  CB CE 



ML26-RS72-19W
 ML26-RS72-26W

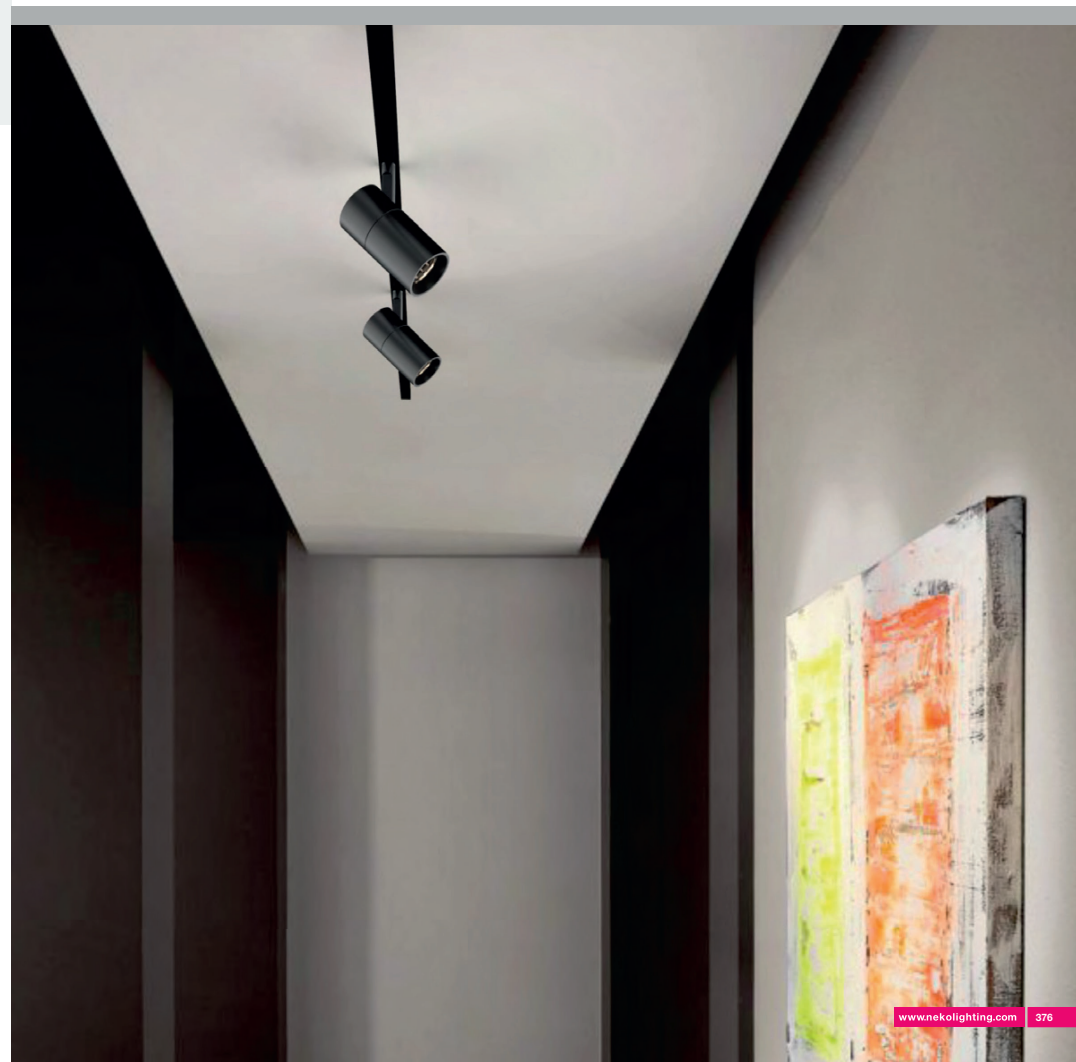
LED Power	System Power	LED Voltage	CRI	CCT	Beam	LED Output	System Output	Code	
18W	19W	48 V	90	2700K	20°	1800lm	1500lm	MLR7-9272019F-BB	
					35°	1800lm	1600lm	MLR7-9273519F-BB	
					55°	1800lm	1600lm	MLR7-9275519F-BB	
					3000K	20°	1900lm	1600lm	MLR7-9302019F-BB
						35°	1900lm	1700lm	MLR7-9303519F-BB
						55°	1900lm	1700lm	MLR7-9305519F-BB
					4000K	20°	2100lm	1700lm	MLR7-9402019F-BB
						35°	2100lm	1800lm	MLR7-9403519F-BB
						55°	2100lm	1800lm	MLR7-9405519F-BB
25W	26W	48 V	90	2700K	20°	2500lm	2100lm	MLR7-9272026F-BB	
					35°	2500lm	2300lm	MLR7-9273526F-BB	
					55°	2500lm	2300lm	MLR7-9275526F-BB	
					3000K	20°	2700lm	2200lm	MLR7-9302026F-BB
						35°	2700lm	2400lm	MLR7-9303526F-BB
						55°	2700lm	2400lm	MLR7-9305526F-BB
					4000K	20°	2900lm	2400lm	MLR7-9402026F-BB
						35°	2900lm	2600lm	MLR7-9403526F-BB
						55°	2900lm	2600lm	MLR7-9405526F-BB

Code Remark: F=ON-OFF A=A(1-10V Dim) D=D(DALI Dim)

Optional



White



NEKO / MODULINE 26 Linear System
48V Low Voltage Modular Linear System
ML26-RS96 Spotlight Inset



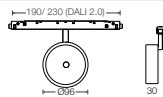
NEW



ML26-RS96-9W



9W CRI90 2700K 3000K 4000K 15° 25° 35° CITIZEN 60,000H/L80B10 IP20 5 YEAR WARRANTY CB CE ENEC Intertek



ML26-RS96-10W

LED Power	System Power	LED Voltage	CRI	CCT	Beam	LED Output	System Output	Code
8W	9W	48 V	90	2700K	15°	900lm	700lm	MLR9-9271509F-BN
					25°	900lm	720lm	MLR9-9272509F-BN
					35°	900lm	720lm	MLR9-9273509F-BN
				3000K	15°	950lm	720lm	MLR9-9301509F-BN
					25°	950lm	750lm	MLR9-9302509F-BN
					35°	950lm	750lm	MLR9-9303509F-BN
				4000K	15°	1050lm	780lm	MLR9-9401509F-BN
					25°	1050lm	830lm	MLR9-9402509F-BN
					35°	1050lm	830lm	MLR9-9403509F-BN

Code Remark: F(ON-OFF) A=A(1-10V Dim) D=D(DALI Dim)

Optional



Brushed Gold

White



Accessory



Honeycomb

Reflector



Black



White



Dark Light



Specular



Matt

NEKO / MODULINE 26 Linear System
48V Low Voltage Modular Linear System
ML26-FRS72 Spotlight Inset



ML26-FRS72-10W
Single Spot



Dark Light Reflector



White Reflector

LED Power	System Power	LED Voltage	CRI	CCT	Beam	LED Output	System Output	Code	
9W	10W	48 V	90	2700K	25°	900lm	620lm	MLF1-9272510F-BC	
					36°	900lm	650lm	MLF1-9273610F-BC	
					50°	900lm	650lm	MLF1-9275010F-BC	
					3000K	25°	950lm	650lm	MLF1-9302510F-BC
						36°	950m	700lm	MLF1-9303610F-BC
						50°	950lm	700lm	MLF1-9305010F-BC
					4000K	25°	1050lm	700lm	MLF1-9402510F-BC
						36°	1050lm	780lm	MLF1-9403610F-BC
						50°	1050lm	780lm	MLF1-9405010F-BC

Code Remark: F=(ON-OFF) A=A(1-10V Dim) D=D(DALI Dim)

LED Power	System Power	LED Voltage	CRI	CCT	Beam	LED Output	System Output	Code	
9W	10W	48 V	90	2700K	25°	900lm	620lm	MLF1-9272510F-BW	
					36°	900lm	650lm	MLF1-9273610F-BW	
					50°	900lm	650lm	MLF1-9275010F-BW	
					3000K	25°	950lm	650lm	MLF1-9302510F-BW
						36°	950m	700lm	MLF1-9303610F-BW
						50°	950lm	700lm	MLF1-9305010F-BW
					4000K	25°	1050lm	700lm	MLF1-9402510F-BW
						36°	1050lm	780lm	MLF1-9403610F-BW
						50°	1050lm	780lm	MLF1-9405010F-BW

Code Remark: F=(ON-OFF) A=A(1-10V Dim) D=D(DALI Dim)

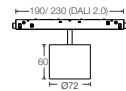
Accessory



Optional



10W CRI90 2700K 3000K 4000K 25° 36° 50° CITIZEN 60,000HOURS UGR < 19 IP20 5 YEAR WARRANTY CB CE Intertek



LED Power	System Power	LED Voltage	CRI	CCT	Beam	LED Output	System Output	Code	
9W	10W	48 V	90	2700K	25°	900lm	620lm	MLF1-9272510F-BS	
					36°	900lm	650lm	MLF1-9273610F-BS	
					50°	900lm	650lm	MLF1-9275010F-BS	
					3000K	25°	950lm	650lm	MLF1-9302510F-BS
						36°	950m	700lm	MLF1-9303610F-BS
						50°	950lm	700lm	MLF1-9305010F-BS
					4000K	25°	1050lm	700lm	MLF1-9402510F-BS
						36°	1050lm	780lm	MLF1-9403610F-BS
						50°	1050lm	780lm	MLF1-9405010F-BS

Code Remark: F=(ON-OFF) A=A(1-10V Dim) D=D(DALI Dim)



Specular Reflector

LED Power	System Power	LED Voltage	CRI	CCT	Beam	LED Output	System Output	Code	
9W	10W	48 V	90	2700K	25°	900lm	620lm	MLF1-9272510F-BM	
					36°	900lm	650lm	MLF1-9273610F-BM	
					50°	900lm	650lm	MLF1-9275010F-BM	
					3000K	25°	950lm	650lm	MLF1-9302510F-BM
						36°	950m	700lm	MLF1-9303610F-BM
						50°	950lm	700lm	MLF1-9305010F-BM
					4000K	25°	1050lm	700lm	MLF1-9402510F-BM
						36°	1050lm	780lm	MLF1-9403610F-BM
						50°	1050lm	780lm	MLF1-9405010F-BM

Code Remark: F=(ON-OFF) A=A(1-10V Dim) D=D(DALI Dim)



Matt Reflector

LED Power	System Power	LED Voltage	CRI	CCT	Beam	LED Output	System Output	Code	
9W	10W	48 V	90	2700K	25°	900lm	620lm	MLF1-9272510F-BB	
					36°	900lm	650lm	MLF1-9273610F-BB	
					50°	900lm	650lm	MLF1-9275010F-BB	
					3000K	25°	950lm	650lm	MLF1-9302510F-BB
						36°	950m	700lm	MLF1-9303610F-BB
						50°	950lm	700lm	MLF1-9305010F-BB
					4000K	25°	1050lm	700lm	MLF1-9402510F-BB
						36°	1050lm	780lm	MLF1-9403610F-BB
						50°	1050lm	780lm	MLF1-9405010F-BB

Code Remark: F=(ON-OFF) A=A(1-10V Dim) D=D(DALI Dim)



Black Reflector

NEKO / MODULINE 26 Linear System
48V Low Voltage Modular Linear System
ML26-FRS72 Double Spotlight Inset



ML26-FRS72-20W
Double Inset



Dark Light Reflector



White Reflector

LED Power	System Power	LED Voltage	CRI	CCT	Beam	LED Output	System Output	Code	
18W	20W	48 V	90	2700K	25°	1800lm	1250lm	MLF2-9272520 F-BC	
					36°	1800lm	1300lm	MLF2-9273620 F-BC	
					50°	1800lm	1300lm	MLF2-9275020 F-BC	
					3000K	25°	1900lm	1300lm	MLF2-9302520 F-BC
						36°	1900lm	1400lm	MLF2-9303620 F-BC
						50°	1900lm	1400lm	MLF2-9305020 F-BC
					4000K	25°	2100lm	1400lm	MLF2-9402520 F-BC
						36°	2100lm	1550lm	MLF2-9403620 F-BC
						50°	2100lm	1550lm	MLF2-9405020 F-BC

Code Remark: F=(ON-OFF) A=A(1-10V Dim) D=D(DALI Dim)

LED Power	System Power	LED Voltage	CRI	CCT	Beam	LED Output	System Output	Code	
18W	20W	48 V	90	2700K	25°	1800lm	1250lm	MLF2-9272520 F-BW	
					36°	1800lm	1300lm	MLF2-9273620 F-BW	
					50°	1800lm	1300lm	MLF2-9275020 F-BW	
					3000K	25°	1900lm	1300lm	MLF2-9302520 F-BW
						36°	1900lm	1400lm	MLF2-9303620 F-BW
						50°	1900lm	1400lm	MLF2-9305020 F-BW
					4000K	25°	2100lm	1400lm	MLF2-9402520 F-BW
						36°	2100lm	1550lm	MLF2-9403620 F-BW
						50°	2100lm	1550lm	MLF2-9405020 F-BW

Code Remark: F=(ON-OFF) A=A(1-10V Dim) D=D(DALI Dim)

Accessory



Honeycomb

Optional

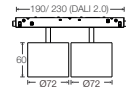


Brushed Gold



White

20W CRI90 2700K 3000K 4000K CITIZEN 60,000HOURS UGR < 19 IP20 5 YEAR WARRANTY CB CE Intertek



LED Power	System Power	LED Voltage	CRI	CCT	Beam	LED Output	System Output	Code	
18W	20W	48 V	90	2700K	25°	1800lm	1250lm	MLF2-9272520 F-BS	
					36°	1800lm	1300lm	MLF2-9273620 F-BS	
					50°	1800lm	1300lm	MLF2-9275020 F-BS	
					3000K	25°	1900lm	1300lm	MLF2-9302520 F-BS
						36°	1900lm	1400lm	MLF2-9303620 F-BS
						50°	1900lm	1400lm	MLF2-9305020 F-BS
					4000K	25°	2100lm	1400lm	MLF2-9402520 F-BS
						36°	2100lm	1550lm	MLF2-9403620 F-BS
						50°	2100lm	1550lm	MLF2-9405020 F-BS

Code Remark: F=(ON-OFF) A=A(1-10V Dim) D=D(DALI Dim)



Specular Reflector



Matt Reflector



Black Reflector

LED Power	System Power	LED Voltage	CRI	CCT	Beam	LED Output	System Output	Code	
18W	20W	48 V	90	2700K	25°	1800lm	1250lm	MLF2-9272520 F-BM	
					36°	1800lm	1300lm	MLF2-9273620 F-BM	
					50°	1800lm	1300lm	MLF2-9275020 F-BM	
					3000K	25°	1900lm	1300lm	MLF2-9302520 F-BM
						36°	1900lm	1400lm	MLF2-9303620 F-BM
						50°	1900lm	1400lm	MLF2-9305020 F-BM
					4000K	25°	2100lm	1400lm	MLF2-9402520 F-BM
						36°	2100lm	1550lm	MLF2-9403620 F-BM
						50°	2100lm	1550lm	MLF2-9405020 F-BM

Code Remark: F=(ON-OFF) A=A(1-10V Dim) D=D(DALI Dim)

LED Power	System Power	LED Voltage	CRI	CCT	Beam	LED Output	System Output	Code	
18W	20W	48 V	90	2700K	25°	1800lm	1250lm	MLF2-9272520 F-BB	
					36°	1800lm	1300lm	MLF2-9273620 F-BB	
					50°	1800lm	1300lm	MLF2-9275020 F-BB	
					3000K	25°	1900lm	1300lm	MLF2-9302520 F-BB
						36°	1900lm	1400lm	MLF2-9303620 F-BB
						50°	1900lm	1400lm	MLF2-9305020 F-BB
					4000K	25°	2100lm	1400lm	MLF2-9402520 F-BB
						36°	2100lm	1550lm	MLF2-9403620 F-BB
						50°	2100lm	1550lm	MLF2-9405020 F-BB

Code Remark: F=(ON-OFF) A=A(1-10V Dim) D=D(DALI Dim)

NEKO / MODULINE 26 Linear System
48V Low Voltage Modular Linear System
Accent Light Inset



ML26-AL190-3W



ML26-AL190-7W



ML26-AL280-9W



ML26-AL280-13W



ML26-AL190-3W



ML26-AL190-7W

LED Power	System Power	LED Voltage	CRI	CCT	Beam	LED Output	System Output	Code	
2W	3W	48 V	90	2700K	20°	230lm	170lm	MLA3-9272003F-BB	
					35°	230lm	170lm	MLA3-9273503F-BB	
					55°	230lm	160lm	MLA3-9275503F-BB	
					3000K	20°	250lm	180lm	MLA3-9302003F-BB
						35°	250lm	180lm	MLA3-9303503F-BB
						55°	250lm	170lm	MLA3-9305503F-BB
					4000K	20°	270lm	200lm	MLA3-9402003F-BB
						35°	270lm	200lm	MLA3-9403503F-BB
						55°	270lm	190lm	MLA3-9405503F-BB

Code Remark: F=(ON-OFF) A=A(1-10V Dim) D=D(DALI Dim)

LED Power	System Power	LED Voltage	CRI	CCT	Beam	LED Output	System Output	Code	
6W	7W	48 V	90	2700K	20°	700lm	500lm	MLA4-9272007F-BB	
					35°	700lm	500lm	MLA4-9273507F-BB	
					55°	700lm	470lm	MLA4-9275507F-BB	
					3000K	20°	750lm	550lm	MLA4-9302007F-BB
						35°	750lm	550lm	MLA4-9303507F-BB
						55°	750lm	500lm	MLA4-9305507F-BB
					4000K	20°	820lm	600lm	MLA4-9402007F-BB
						35°	820lm	600lm	MLA4-9403507F-BB
						55°	820lm	550lm	MLA4-9405507F-BB

Code Remark: F=(ON-OFF) A=A(1-10V Dim) D=D(DALI Dim)

Optional



White



ML26-AL280-9W



ML26-AL280-13W

LED Power	System Power	LED Voltage	CRI	CCT	Beam	LED Output	System Output	Code	
8W	9W	48 V	90	2700K	20°	950lm	700lm	MLA1-9272009F-BB	
					35°	950lm	700lm	MLA1-9273509F-BB	
					55°	950lm	650lm	MLA1-9275509F-BB	
					3000K	20°	1000lm	750lm	MLA1-9302009F-BB
						35°	1000lm	750lm	MLA1-9303509F-BB
						55°	1000lm	680lm	MLA1-9305509F-BB
					4000K	20°	1100lm	800lm	MLA1-9402009F-BB
						35°	1100lm	800lm	MLA1-9403509F-BB
						55°	1100lm	750lm	MLA1-9405509F-BB

Code Remark: F=(ON-OFF) A=A(1-10V Dim) D=D(DALI Dim)

LED Power	System Power	LED Voltage	CRI	CCT	Beam	LED Output	System Output	Code	
12W	13W	48 V	90	2700K	20°	1400lm	1000lm	MLA2-9272013F-BB	
					35°	1400lm	1000lm	MLA2-9273513F-BB	
					55°	1400lm	950lm	MLA2-9275513F-BB	
					3000K	20°	1500lm	1100lm	MLA2-9302013F-BB
						35°	1500lm	1100lm	MLA2-9303513F-BB
						55°	1500lm	1000lm	MLA2-9305513F-BB
					4000K	20°	1600lm	1200lm	MLA2-9402013F-BB
						35°	1600lm	1200lm	MLA2-9403513F-BB
						55°	1600lm	1100lm	MLA2-9405513F-BB

Code Remark: F=(ON-OFF) A=A(1-10V Dim) D=D(DALI Dim)

Optional



White

NEKO / MODULINE 26 Linear System
 48V Low Voltage Modular Linear System
 Adjustable Accent Light Inset



ML26-SA280-13W
Adjustable Accent Light Inset



NEKO / MODULINE 26 Linear System
 48V Low Voltage Modular Linear System
 ML26-AA315 Accent Light Inset



ML26-AA315-15W



Adjustable range 150°

13W CRI90 2700K 3000K 4000K 20° 35° 55° OSRAM 50,000Hr L80B10 UGR < 19 IP20 5 YEAR WARRANTY CB CE Intertek



ML26-SA280-13W

LED Power	System Power	LED Voltage	CRI	CCT	Beam	LED Output	System Output	Code	
12W	13W	48 V	90	2700K	20°	1400lm	1000lm	MLA5-9272013F-BB	
					35°	1400lm	1000lm	MLA5-9273513F-BB	
					55°	1400lm	950lm	MLA5-9275513F-BB	
					3000K	20°	1500lm	1100lm	MLA5-9302013F-BB
						35°	1500lm	1100lm	MLA5-9303513F-BB
						55°	1500lm	1000lm	MLA5-9305513F-BB
					4000K	20°	1600lm	1200lm	MLA5-9403513F-BB
						35°	1600lm	1200lm	MLA5-9403513F-BB
						55°	1600lm	1100lm	MLA5-9405513F-BB

Code Remark: F(ON-OFF) A=A(1-10V Dim) D=D(DALI Dim)

Optional



White

15W CRI90 2700K 3000K 4000K 30° OSRAM 50,000Hr L80B10 UGR < 19 IP20 5 YEAR WARRANTY CB CE Intertek



ML26-AA315-15W

LED Power	System Power	LED Voltage	CRI	CCT	Beam	LED Output	System Output	Code	
14W	15W	48 V	90	2700K	30°	1200lm	1050lm	MLA7-9273015F-BB	
					3000K	30°	1400lm	1100lm	MLA7-9303015F-BB
					4000K	30°	1500lm	1200lm	MLA7-9403015F-BB

Code Remark: F(ON-OFF) A=A(1-10V Dim) D=D(DALI Dim)

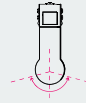
NEKO / MODULINE 26 Linear System
48V Low Voltage Modular Linear System
ML26-AG315 General Light Inset



NEW



ML26-AG315-10W

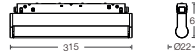


Adjustable range 150°

NEKO / MODULINE 26 Linear System
48V Low Voltage Modular Linear System
Adjustable General Light Inset



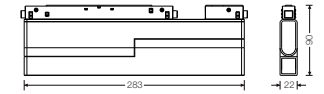
ML26-SG280-7W
Adjustable General Light Inset



ML26-AG315-10W

LED Power	System Power	LED Voltage	CRI	CCT	Beam	LED Output	System Output	Code
9W	10W	48 V	90	2700K	120°	750lm	500lm	MLG6-927A210F-BB
				3000K	120°	800lm	550lm	MLG6-930A210F-BB
				4000K	120°	850lm	600lm	MLG6-940A210F-BB

Code Remark: F(ON-OFF) A=A(1-10V Dim) D=D(DALI Dim)



ML26-SG280-7W

LED Power	System Power	LED Voltage	CRI	CCT	Beam	LED Output	System Output	Code
6W	7W	48 V	90	2700K	110°	550lm	430lm	MLG5-927A107F-BN
				3000K	110°	600lm	400lm	MLG5-930A107F-BN
				4000K	110°	650lm	450lm	MLG5-940A107F-BN

Code Remark: F(ON-OFF) A=A(1-10V Dim) D=D(DALI Dim)

Optional



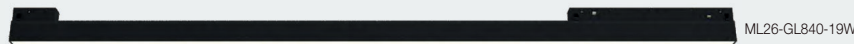
White



ML26-GL280-7W



ML26-GL560-13W



ML26-GL840-19W



ML26-GL1120-26W



LED Power	System Power	LED Voltage	CRI	CCT	Beam	LED Output	System Output	Code
6W	7W	48 V	90	2700K	110°	550lm	430lm	MLG1-927A107F-BN
				3000K	110°	600lm	400lm	MLG1-930A107F-BN
				4000K	110°	650lm	450lm	MLG1-940A107F-BN
Code Remark: F(ON-OFF) A=A(1-10V Dim) D=D(DALI Dim)								
12W	13W	48 V	90	2700K	110°	1100lm	750lm	MLG2-927A113F-BN
				3000K	110°	1200lm	800lm	MLG2-930A113F-BN
				4000K	110°	1300lm	900lm	MLG2-940A113F-BN
Code Remark: F(ON-OFF) A=A(1-10V Dim) D=D(DALI Dim)								

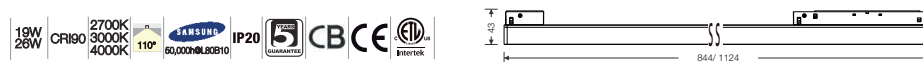
ML26-GL280-7W

ML26-GL560-13W

Optional



White



LED Power	System Power	LED Voltage	CRI	CCT	Beam	LED Output	System Output	Code
18 W	19 W	48 V	90	2700K	110°	1700lm	1100lm	MLG3-927A119F-BN
				3000K	110°	1800lm	1200lm	MLG3-930A119F-BN
				4000K	110°	1900lm	1300lm	MLG3-940A119F-BN
Code Remark: F(ON-OFF) A=A(1-10V Dim) D=D(DALI Dim)								
24W	26W	48 V	90	2700K	110°	2200lm	1500lm	MLG4-927A126F-BN
				3000K	110°	2400lm	1600lm	MLG4-930A126F-BN
				4000K	110°	2600lm	1700lm	MLG4-940A126F-BN
Code Remark: F(ON-OFF) A=A(1-10V Dim) D=D(DALI Dim)								

ML26-GL840-19W

ML26-GL1120-26W

Optional



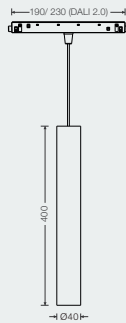
White

NEKO / MODULINE 26 Linear System

48V Low Voltage Modular Linear System
Pendant Spot Inset



ML26-PS40-12W

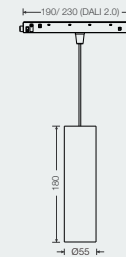


NEKO / MODULINE 26 Linear System

48V Low Voltage Modular Linear System
Pendant Spot Inset



ML26-PS55-14W



LED Power	System Power	LED Voltage	CRI	CCT	Beam	LED Output	System Output	Code	
11W	12W	48 V	90	2700K	18°	1000lm	700lm	MLP1-9271812F-BB	
					30°	1000lm	700lm	MLP1-9273012F-BB	
					45°	1000lm	550lm	MLP1-9274512F-BB	
					3000K	18°	1100lm	750lm	MLP1-9301812F-BB
						30°	1100lm	750lm	MLP1-9303012F-BB
						45°	1100lm	600lm	MLP1-9304512F-BB
					4000K	18°	1200lm	800lm	MLP1-9401812F-BB
						30°	1200lm	800lm	MLP1-9403012F-BB
						45°	1200lm	650lm	MLP1-9404512F-BB

Code Remark: F=(ON-OFF) A=A(1-10V Dim) D=D(DALI Dim)

ML26-PS40-12W

Optional



Brushed Gold White

LED Power	System Power	LED Voltage	CRI	CCT	Beam	LED Output	System Output	Code	
13W	14W	48 V	90	2700K	18°	1100lm	900lm	MLP2-9271814F-BB	
					24°	1100lm	900lm	MLP2-9272414F-BB	
					36°	1100lm	750lm	MLP2-9273614F-BB	
					3000K	18°	1200lm	950lm	MLP2-9301814F-BB
						24°	1200lm	950lm	MLP2-9302414F-BB
						36°	1200lm	800lm	MLP2-9303612F-BB
					4000K	18°	1300lm	1000lm	MLP2-9401814F-BB
						24°	1300lm	1000lm	MLP2-9402414F-BB
						36°	1300lm	850lm	MLP2-9403614F-BB

Code Remark: F=(ON-OFF) A=A(1-10V Dim) D=D(DALI Dim)

ML26-PS55-14W

Optional

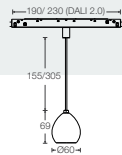


White

NEKO / MODULINE 26 Linear System
48V Low Voltage Modular Linear System
ML26-PS60 Pendant Light Inset



ML26-PS60-5W



ML26-PS60-5W

LED Power	System Power	LED Voltage	CRI	CCT	Beam	LED Output	System Output	Code
4.5W	5W	48 V	90	2700K	18°	470lm	370lm	MLP3-9271805F-BB
					24°	470lm	370lm	MLP3-9272405F-BB
					36°	470lm	370lm	MLP3-9273605F-BB
					50°	470lm	370lm	MLP3-9275005F-BB
			3000K		18°	500lm	400lm	MLP3-9301805F-BB
					24°	500lm	400lm	MLP3-9302405F-BB
					36°	500lm	400lm	MLP3-9303605F-BB
					50°	500lm	400lm	MLP3-9305005F-BB
			4000K		18°	550lm	450lm	MLP3-9401805F-BB
					24°	550lm	450lm	MLP3-9402405F-BB
					36°	550lm	450lm	MLP3-9403605F-BB
					50°	550lm	450lm	MLP3-9405005F-BB

Code Remark: F=(ON-OFF) A=A(1-10V Dim) D=D(DALI Dim)

Optional

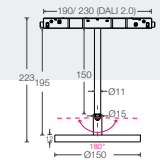


White

NEKO / MODULINE 26 Linear System
48V Low Voltage Modular Linear System
ML26-PAD150 Pendant Light Inset



ML26-PAD150-12W



ML26-PAD150-12W

LED Power	System Power	LED Voltage	CRI	CCT	Beam	LED Output	System Output	Code	
11W	12W	48 V	90	2700K	110°	900lm	720lm	MLPA-927A112F-BN	
					3000K	110°	950lm	750lm	MLPA-930A112F-BN
					4000K	110°	1050lm	800lm	MLPA-940A112F-BN

Code Remark: F=(ON-OFF) A=A(1-10V Dim) D=D(DALI Dim)

Optional



Brushed Gold



White

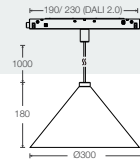
NEKO / MODULINE 26 Linear System
 48V Low Voltage Modular Linear System
 ML26-PD300 Pendant Light Inset



NEW



ML26-PD300-18W



LED Power	System Power	LED Voltage	CRI	CCT	Beam	LED Output	System Output	Code
17W	18W	48 V	90	2700K	60°	1600lm	1050lm	MLPD-9276018F-BB-H
				3000K	60°	1700lm	1100lm	MLPD-9306018F-BB-H
				4000K	60°	1800lm	1200lm	MLPD-9406018F-BB-H

Code Remark: F(ON-OFF) A=A(1-10V Dim) D=D(DALI Dim)



17W	18W	48 V	90	2700K	60°	1600lm	1050lm	MLPD-9276018F-BW-H
				3000K	60°	1700lm	1100lm	MLPD-9306018F-BW-H
				4000K	60°	1800lm	1200lm	MLPD-9406018F-BW-H

Code Remark: F(ON-OFF) A=A(1-10V Dim) D=D(DALI Dim)

Optional



White



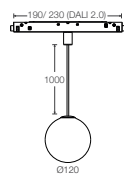
NEKO / MODULINE 26 Linear System
 48V Low Voltage Modular Linear System
 ML26-PB120 Pendant Light Inset



NEW



ML26-PB120-10W
 (Frosted Glass)



ML26-PB120-10W

LED Power	System Power	LED Voltage	CRI	CCT	Beam	LED Output	System Output	Code
9W	10W	48 V	90	2700K	180°	900lm	620lm	MLPB-927A810F-BN
				3000K	180°	950lm	650lm	MLPB-930A810F-BN
				4000K	180°	1050lm	700lm	MLPB-940A810F-BN

Code Remark: F=(ON-OFF) A=A(1-10V Dim) D=D(DALI Dim)

Optional



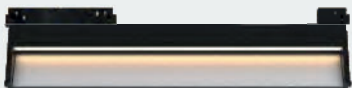
White



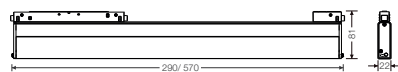
NEKO / MODULINE 26 Linear System
48V Low Voltage Modular Linear System
Wall Washer Inset



ML26-WW280-7W



ML26-WW560-13W



ML26-WW280-7W



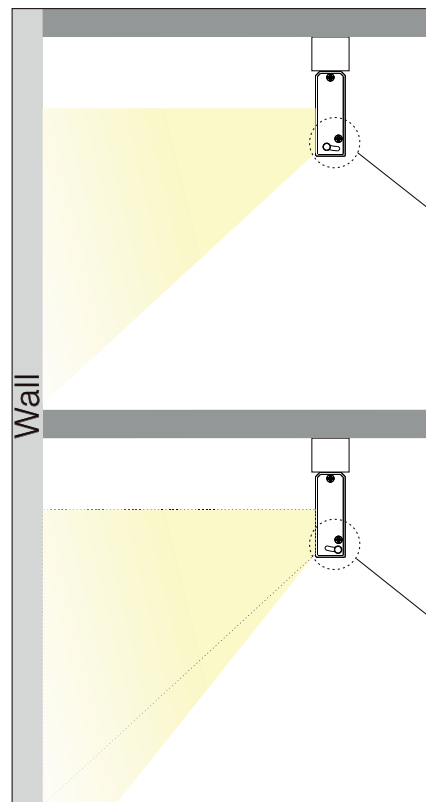
ML26-WW560-13W

LED Power	System Power	LED Voltage	CRI	CCT	Beam	LED Output	System Output	Code
6W	7W	48 V	90	2700K	Wall Washer	550lm	330lm	MLW1-927A107F-BM
					Wall Washer	600lm	350lm	MLW1-930A107F-BM
					Wall Washer	650lm	400lm	MLW1-940A107F-BM
Code Remark: F=(ON-OFF) A=A(1-10V Dim) D=D(DALI Dim)								
12W	13W	48 V	90	2700K	Wall Washer	1100lm	670lm	MLW2-927A113F-BM
					Wall Washer	1200lm	700lm	MLW2-930A113F-BM
					Wall Washer	1300lm	750lm	MLW2-940A113F-BM
Code Remark: F=(ON-OFF) A=A(1-10V Dim) D=D(DALI Dim)								

Optional



White



Adjustable Wall Washer

