



Before starting any work on the luminaire, make sure the power supply is cut.
All work must be carried out by qualified and authorised staff.

Installation and other recommendations:

1 - Earth of all street lamps in accordance with the NF C 17-200 standard, whatever the class of equipment used on them. For class 2 insulating street lamps (timber or wall mounted for example), electrical continuity must be guaranteed between the luminaire's mechanical interface and the earthing.

2 - Do not install electronic ballasts with ferro-magnetic ballasts on the same line.

3 - Make sure of network, equipment and connection quality to avoid neutral breakage or the presence of poorly insulated devices, for example.

4 - Size installation protection systems depending on the number of luminaires and avoid those that generate arcs when they are switched on or off.

5 - Whenever possible, install a centralised overload protection box on each line header cabinet as well as at the foot of the lamp posts. These additional precautions are relative and not absolute.

Required tools:
- 8mm, 13mm, 19mm hex wrench
- Size 5 allen wrench
- Flat-tipped screwdriver

1. TECHNICAL SPECIFICATIONS

Class I or II
IP44 – LED module IP66



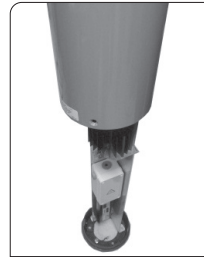
2. INSTALLATION

2.1 - Take the bollard out of the box. Position it vertically.

2.2 - Remove the 3 FHc M8x25 stainless steel screws



2.3 - Lift the drum



2.4 - For mortaring:

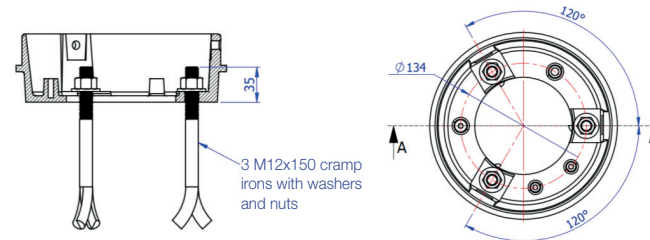


a) disconnect the earth wire (1 H M8x12 screw + washer)

b) remove the plate (3 H M5x12 screws + washers)

c) embed using the 3 supplied clamp irons providing for a central power supply sheath that sticks out 50mm from the finished ground level

A-A CROSS SECTION



NB: The bollard can be fixed using M12 chemical anchors (not supplied)

2.5 - Once the block is dry, fix the bollard onto the 3 M12 rods with the 3 washers + nuts

2.6 - Refit the plate and reconnect the earth wire with lug

2.7 - Connect the mains cable to the connection box (class II), to the terminal block (class I)



2.8 - Refit the drum using the 3 FHc M8x25 stainless steel screws (move it up and down until it fits against the base, if necessary)