

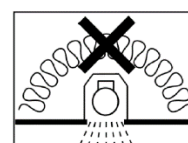
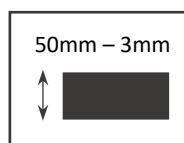
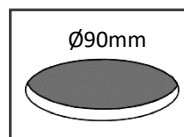
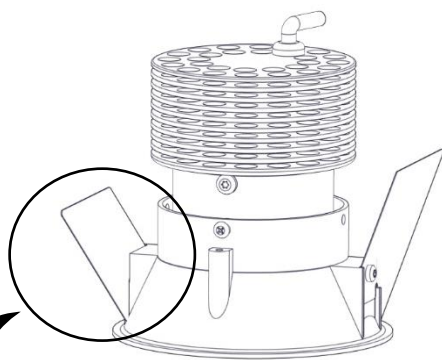
IN

Installationsmanual vid montering och installation av IN-move/fix
(*Installation manual for assembly and installation of IN-move/fix.*)

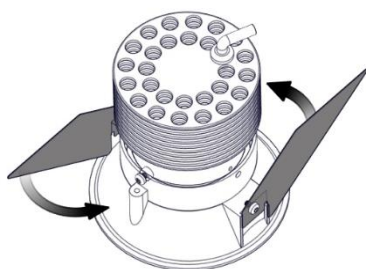


FLUX AB | Mallslingan 26 | SE-18766 Täby
08-693 05 00 | www.flux.nu

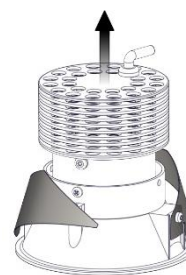
Montering av IN-move/fix (Assembly of IN-move/fix)



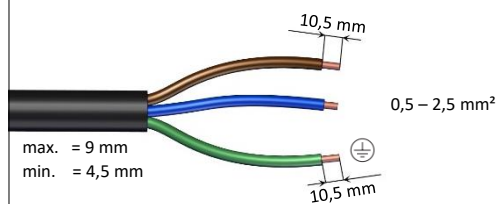
1



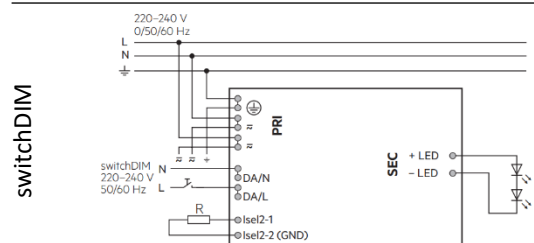
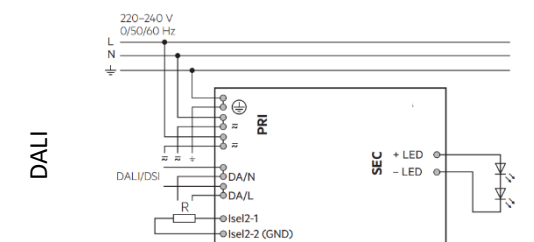
2



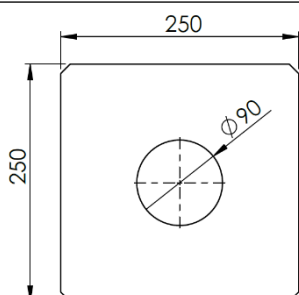
Kabeltyp och tvärsnitt (Wiring type and cross section)



Armatur installation (Luminaire installation)



Tillval, mjukt undertak mått (Optional, soft ceiling dimension)



Ljuskällan ska enbart bytas ut av tillverkaren eller dess utsedda person.

(The light source shall only be replaced by the manufacturer or its designated person)